



**OMCR®**

STANDARD DIE COMPONENTS







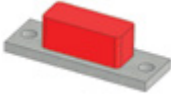















**STANDARD**



**2016.00**

<b>WDX3</b>	<b>WDX3-60-0165</b>	<b>WDX3-70 0101÷103</b>	<b>WDX3-70-0201</b>	<b>WDX3-70-0402</b>
				
	Stripper for blanking dies Abstreifer für platinenschnitte Estrattore Per Stampi	Stock Keeper Plate Platte Piastra	Shoulder screw Stift Perno	Stock Lifter Heber Sollevatore
	237	237	238	238
<b>WDX3-70 0501÷0504</b>	<b>WDX3-70 0505÷0506</b>	<b>WDX3-70-2001-A</b>	<b>WDX3-70-2002-A</b>	<b>WDX3-70-2101-A</b>
				
Guide bar Führung Guida	Guide bar Führung Guida	Coil guide roller Bandführung Guidanastro	Coil guide roller Bandführung Guidanastro	Coil guide roller Bandführung Guidanastro
239	239	240	240	240
<b>WDX3-80 2401÷2402</b>	<b>WDX4</b>	<b>WDX4-70 0201÷0202</b>	<b>WDX4-70 0301÷0401</b>	<b>WDX4-70 0501÷0502</b>
				
Visual locator setting punch Endkontrollstempel Punzone di visualizzazione		Air relief tubing Tube Tubo sfogo aria	Locating cone Kegeldistanz Cono di centraggio	Distance Plate Abstimscheibe Distanziale
241		241	242	242
<b>WDX4-70-0801</b>	<b>WDX4-70 12070÷12150</b>	<b>WDX4-70-1301</b>	<b>WDX5</b>	<b>WDX5-60-3301</b>
				
Locating Cone Zentrierbolzen Centraggio	Upper Distance Block Oberer Abstandblock Distanziale	Lower Distance Block Underter Abstandblock Distanziale		Dual Hinge Scharniernut Cerniera femmina
243	243	243		244

<p><b>WDX5-60-3302</b></p>  <p>Hinge Scharnierfeder Cerniera maschio</p> <p>244</p>	<p><b>WDX5-60-3303</b></p>  <p>Hinge pin Scharnierstift Perno</p> <p>244</p>	<p><b>WDX5-60-3301-A</b></p>  <p>Slide bolt with hinge Bolzen mit Scharnier Perno con cerniera</p> <p>245</p>	<p><b>WDX5-60-3401</b></p>  <p>Hinge Scharnierfeder Cerniera maschio</p> <p>245</p>	<p><b>WDX5-60-3420</b></p>  <p>Slide bolt Bolzen Perno</p> <p>245</p>	
<p><b>WDX5-60-3401-A</b></p>  <p>Slide bolt with hinge Bolzen mit Scharnier Perno con cerniera</p> <p>246</p>	<p><b>WDX5-60-3704</b></p>  <p>Hinge bracket Bügel Staffa</p> <p>246</p>	<p><b>WDX5-61-0901</b></p>  <p>Matrix retainer Haltestück Ritegno per matrice</p> <p>246</p>	<p><b>WDX7</b></p>		<p><b>WDX7-60 1101÷1102</b></p>  <p>Positive return wear plate Platte Piastra di reazione</p> <p>247</p>
<p><b>WDX7-60 1701÷1704</b></p>  <p>Coupling plate Befestigungsplatte Staffa di reazione</p> <p>247</p>	<p><b>WDX7-60 1802÷1807</b></p>  <p>Coupling nut Kupplungsmutter Aggancio Staffa</p> <p>248</p>	<p><b>WDX7-60-1901</b></p>  <p>Holdback Pin Handgriff Impugnatura</p> <p>248</p>	<p><b>WDX7-65 01075200÷01150450</b></p>  <p>Wear plate steel Deckleiste stahl Piastra Guida in acciaio</p> <p>249</p>	<p><b>WDX7-65 03165150÷03165300</b></p>  <p>"V" driver Prismenführung Guida a "V"</p> <p>250</p>	
<p><b>WDX7-65 05111÷05243-A</b></p>  <p>"V" driver with positive return Prismenführung mit Zwangsrückholer Guida a "V" con gancio di ritorno</p> <p>251</p>	<p><b>WDX7-65 09100125÷09160170</b></p>  <p>Cam dwell wear plate Überlaufkeile Cuneo</p> <p>252</p>	<p><b>WDX7-65 09100125÷09160170</b></p>  <p>Cam dwell wear plate Überlaufkeile Cuneo</p> <p>253</p>	<p><b>WDX7-65-0445</b></p>  <p>Positive return Zwangsrückholer Gancio</p> <p>254</p>	<p><b>WDX7-65- 11175100÷11175200</b></p>  <p>Cam slide cover plate Deckleiste für Schieber Supporto per camme</p> <p>254</p>	

WDX7-70-1001-A	WDX7-70-1536	WDX7-70 16080÷16130	WDX7-70 18050÷18100	WDX7-70 19090÷19140				
								
Upper cam safety screw Sicherheitschraube für oberschieber Tirante di sicurezza	Slide stop block Schieberranschlag Arresto slitta	Stop block Anschlag Blocchetto di arresto	Cam buffer Anschlag Arresto	Buffer support Dämpferhalterung Supporto ammortizzatore				
255	255	256	256	257				
WDX13								
					WDX13-60 08025÷08125-A	WDX13-60 08025÷08125	WDX13-60-1001	WDX13-65 01050100X÷01160315X
								
					Guide bush NAAMS Führungsbuchse NAAMS Boccola autolubrificante NAAMS	Guide bush NAAMS Führungsbuchse NAAMS Boccola autolubrificante NAAMS	Toe clamp Haltestück Ritegno	Wear plate VDI 3357 Gleitplatte VDI 3357 Piastra guida VDI 3357
257	258	258	259					
WDX13-65 01050100Y÷01160315Y	WDX13-65 04040÷04152	WDX13-65 04040÷04152-1	WDX13-65 10080315÷10080400-A	WDX13-65 10080315÷10080400				
								
Wear plate VDI 3357 Gleitplatte VDI 3357 Piastra guida VDI 3357	Stop block Abstandsblock Distanziale	Stop block Abstandsblock Distanziale	Guide post Führungssäule Colonna guida	Guide post Führungssäule Colonna guida				
260	261	261	262	262				
WDX13-65 11080315÷11080400	WDX13-65 12125400÷12125500-A	WDX13-65 12125400÷12125500	WDX13-65 13125400÷13125500	WDX13-65 20025140÷20100500-A				
								
Guide post Führungssäule Colonna guida	Guide post Führungssäule Colonna guida	Guide post Führungssäule Colonna guida	Guide post Führungssäule Colonna guida	Guide post NAAMS Führungssäule NAAMS Colonna guida NAAMS				
263	263	264	264	265				

WDX13-65 20025140÷20100500		WDX13-65 22025140÷22100500		<b>WDX14</b>		WDX14-60 0125÷0163		WDX14-60 025501-A	
Guide post Führungssäule Colonna guida		Guide post NAAMS Führungssäule NAAMS Colonna guida NAAMS		Pad retainer plate Platte Piastra		Pad retainer pin Steckbolzen Perno di arresto			
266		267		268		268			
WDX14-60 025502-A		WDX14-60-0280		WDX14-60 0325÷0363-A		WDX14-60-0406		WDX14-60 0425÷0463-A	
Pad retainer pin Steckbolzen Perno di arresto		Safety pin Stift Perno di sicurezza		Pad retainer pin Steckbolzen Perno di arresto		Securing disc Scheibe Rondella di sicurezza		Pad retainer pin Steckbolzen Perno di arresto	
269		269		270		270		271	
WDX14-60 0516÷0530		WDX14-60 0616÷0620		WDX14-60 0901÷0904		WDX14-60 1001÷1004		WDX14-60 1006÷1009	
Retainer bolt Zugbolzensatz Gruppo tirante		Retainer bolt Zugbolzensatz Gruppo tirante		Buffer Stoßdämpfer Ammortizzatore		Washer retainer Scheibe Rondella		Threaded Block Dübel Tassello	
272		273		274		274		274	
WDX14-60 1310÷1320		WDX14-60 1425÷1463-A		WDX14-60 1525÷1563-A		WDX14-60 1701÷1703		WDX14-62-0175	
Washer retainer Scheibe Rondella		Pad retainer pin Steckbolzen Perno di arresto		Pad retainer pin Steckbolzen Perno di arresto		Shock absorber Halteelement Ammortizzatore		Locating cone Kegeldistanz Cono di centraggio	
275		275		276		276		277	

<p><b>WDX14-65</b> 1110÷1116</p>  <p>Retainer bolt Zugbolzensatz Gruppo tirante</p> <p>277</p>	<p><b>WDX14-65</b> 0150180÷015250</p>  <p>Retainer bolt Zugbolzensatz Gruppo tirante</p> <p>278</p>	<p><b>WDX14-65</b> 0263200÷0263465</p>  <p>Retainer bolt Zugbolzensatz Gruppo tirante</p> <p>279</p>	<p><b>WDX14-65</b> 0380250÷0380400</p>  <p>Retainer bolt Zugbolzensatz Gruppo tirante</p> <p>280</p>	<p><b>WDX14-65</b> 04050180÷04080400</p>  <p>Guide post Führungssäule Colonna guida</p> <p>281</p>	
<p><b>WDX14-65</b> 05110÷05150</p>  <p>Washer Scheibe Rondella</p> <p>282</p>	<p><b>WDX14-65</b> 05050÷05080</p>  <p>Spacer Distanzstück Distanziale</p> <p>282</p>	<p><b>WDX14-65</b> 06110÷06150</p>  <p>Retainer bolt block Aufnahmebolzen block Tassello di tenuta</p> <p>282</p>	<p><b>WDX14-65</b> 07110÷07150</p>  <p>Buffer Stossdämpfer Ammortizzatore</p> <p>283</p>	<p><b>WDX14-65</b> 0820350÷0830585</p>  <p>Retainer bolt assembly Aufnahmebolzen zusammenbau Gruppo tirante</p> <p>283</p>	
<p><b>WDX14-70</b> 194032÷1980125</p>  <p>Elastomer spring Elastomerfeder Molla in elastomero</p> <p>284</p>	<h2>WDX15</h2>		<p><b>WDX15-70 0101</b></p>  <p>Bush Buchse Boccola</p> <p>284</p>	<p><b>WDX15-70-0201</b></p>  <p>Washer Scheibe Rondella</p> <p>285</p>	<p><b>WDX15-70-0301</b></p>  <p>Shim Spannschlitz Spessore</p> <p>285</p>
<p><b>WDX15-70-0401</b></p>  <p>Locating Pin Zentrierbolzen Centraggio</p> <p>285</p>	<h2>WDX16</h2>		<p><b>WDX16-60</b> 01065÷01250</p>  <p>Gage Hardened Einweiser Gehärtet Riferimento indurito</p> <p>286</p>	<p><b>WDX16-70</b> 0202÷0224</p>  <p>Side Guide Führung Guida foglio</p> <p>286</p>	<p><b>WDX16-70</b> 0301R÷0301L</p>  <p>Support for sensor Lagekontrolle für platinen Supporto sensore</p> <p>287</p>

<b>WDX16-70</b> <b>0701R÷0701L</b>	<b>WDX16-70</b> <b>0901R÷0901L</b>	<h2 style="text-align: center;">WDX17</h2>		<b>WDX17-70-0501</b>	<b>WDX17-60</b> <b>0236175÷0245360</b>
					
Support for sensor Lagekontrolle für platinen Supporto sensore	Support for sensor Lagekontrolle für platinen Supporto sensore	Clamp Haltestück Staffa	Air Pin Druckbolzen Candela		
287	288	288	289		
<b>WDX17-60</b> <b>0345175÷0345360</b>	<b>WDX17-70</b> <b>0736175÷0745360</b>	<b>WDX17-70</b> <b>0845175÷0845360</b>	<h2 style="text-align: center;">WDX19</h2>		<b>WDX19-70</b> <b>0701÷0703</b>
					
Air Pin Druckbolzen Candela	Air Pin Druckbolzen Candela	Air Pin Druckbolzen Candela	Bracket Bügel Staffa		
289	290	290	291		
<h2 style="text-align: center;">WDX20</h2>		<b>WDX20-65</b> <b>0310÷0325</b>	<b>WDX20-65-0601</b>	<b>WDX20-66</b> <b>0110-A÷0119-A</b>	<b>WDX20-66</b> <b>02110÷02119</b>
					
Trademark stamp Buchstabenstempel Punzone marchio	Visual locator punch Endkontrollstempel Punzone di visualizzazione	Retainer for stamps Halteplatte Portatimbri	Retainer for stamps Halteplatte Portatimbri		
291	291	292	292		
<b>WDX20-66</b> <b>02210÷02219</b>	<b>WDX20-66</b> <b>03120÷03220-A</b>	<b>WDX20-66</b> <b>03115÷03112</b>	<b>WDX20-66</b> <b>03205÷03208</b>	<b>WDX20-70-0101</b>	
					
Backing plate Druckplatte Distanziale	Retainer for stamps Halteplatte Portatimbri	Retainer for stamps Halteplatte Portatimbri	Backing plate Druckplatte Distanziale	Visual locator punch Endkontrollstempel Punzone di visualizzazione	
292	293	293	293	294	

<p><b>WDX20-70-0250</b></p>	<p><b>WDX20-70 0200÷0256</b></p>	<p><b>WDX20-70 0330÷0372</b></p>	<p><b>WDX20-70 0430÷0472</b></p>	<p><b>WDX22</b></p>
				
<p>Stamps set Stempelsatz Set punzoni</p>	<p>Stamps Buchstabenstempel Punzone marchio</p>	<p>Retainer for stamps Halteplatte Portatimbri</p>	<p>Backing plate Druckplatte Distanziale</p>	
<p>294</p>	<p>295</p>	<p>296</p>	<p>296</p>	
<p><b>WDX22-60 0135÷0180</b></p>	<p><b>WDX22-70-0501</b></p>	<p><b>WDX30</b></p>	<p><b>WDX30-60 0125125÷0130180</b></p>	<p><b>WDX30-60 02080÷02125</b></p>
				
<p>Lifting pin Tragbolzen mit fallringsicherung Perno di sollevamento</p>	<p>Lifting bracket Tragzapfen Staffa di sollevamento</p>	<p>Standard key Passfeder Chiavetta</p>	<p>Standard key Passfeder Chiavetta</p>	
<p>297</p>	<p>298</p>	<p>298</p>	<p>299</p>	
<p><b>WDX35</b></p>	<p><b>WDX35-70 1401÷1502</b></p>	<p><b>WDX35-70 1611÷1662</b></p>		
				
<p>Air coupling bracket Luftanschlussbock Supporto innesti rapidi</p>	<p>Color mark air connection Farbige Scheibe Coperchio colorato</p>			
<p>299</p>	<p>299</p>			

**STRIPPER FOR BLANKING DIES - ABSTREIFER FUR PLATINENSCHNITTE - ESTRATTORE PER STAMPI**



**Notes**

**Material:** Urelast 90 SH

**STOCK**



**FORD CODE**

**WDX3-60-0165**

**FORD CODE**

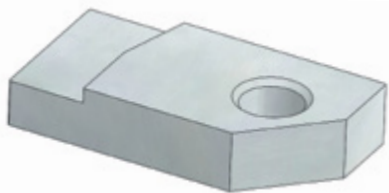
**WDX3-60-0165**

Standard Ford

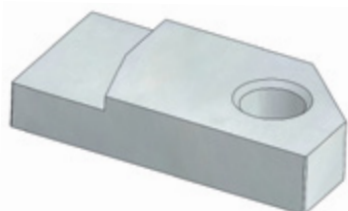
**STOCK KEEPER PLATE - PLATTE - PIASTRA**



**WDX3-70-0101**



**WDX3-70-0102**



**WDX3-70-0103**

**Notes**

**Material:** Si37

**STOCK**

\*Stanzwerkzeuge  
Stampi di tranciatura

\*\*Folgeverbundwerkzeuge  
Stampi progressivi



**FORD CODE**

**WDX3-70-0102**

**FORD CODE**

**Using**

**WDX3-70-0101**

Blank dies\*

**WDX3-70-0102**

Progressive dies\*\*

**WDX3-70-0103**

Progressive dies\*\*

**SHOULDER SCREW - STIFT - PERNO**



**Notes**

**Material:** CK45

**STOCK**



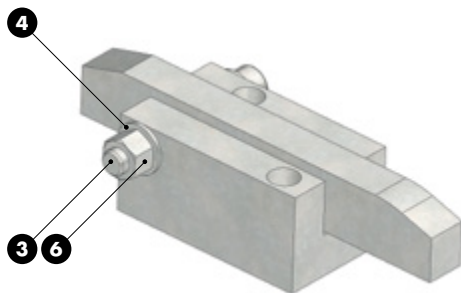
**FORD CODE**

**WDX3-70-0201**

**FORD CODE**

**WDX3-70-0201**

**STOCK LIFTER - HEBER - SOLLEVATORE**

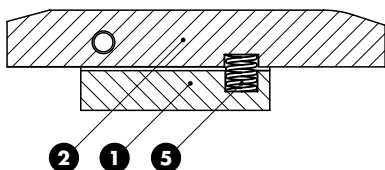


**Notes**

- 1** **Material:** CK45
- 2** **Material:** CK45 - HRC: 58÷60
- 3** Screw M12x80 DIN EN ISO 4762
- 4** Washer DIN 433-1
- 5** Spring WDX14-70-0412 LG.30
- 6** Nut M12 DIN 934



**STOCK**



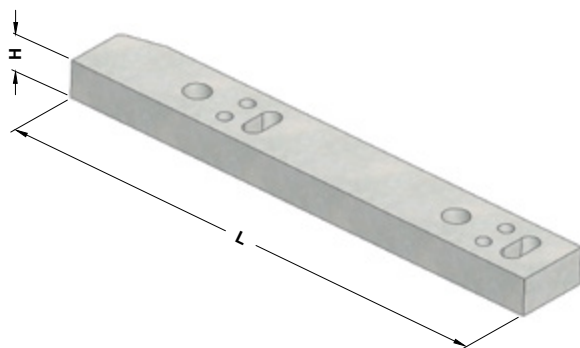
**FORD CODE**

**WDX3-70-0402-A**

**FORD CODE**

**WDX3-70-0402-A**

## GUIDE BAR - FÜHRUNG - GUIDA



### Notes

**Material:** 36CrNiMo4  
**HRC:** 56÷58

STOCK

Standard Ford

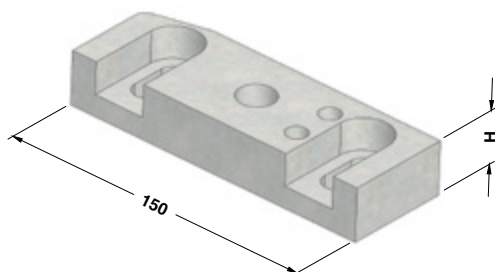


**FORD CODE**  
**WDX3-70-0502**

FORD CODE	H	L
WDX3-70-0501	25	350
WDX3-70-0502*	50	350
WDX3-70-0503	25	250
WDX3-70-0504*	50	250

\*Use this guide bar only when spring loaded roller frame is used  
Diese Führungsschienen nur verwenden, wenn federbandführungen verwendet werden  
Utilizzare queste barre di guida solo quando sono usati guidanastro a molla

## GUIDE BAR - FÜHRUNG - GUIDA



### Notes

**Material:** 36CrNiMo4  
**HRC:** 56÷58

STOCK

\*Use this guide bar only when spring loaded roller frame is used  
Diese Führungsschienen nur verwenden, wenn federbandführungen verwendet werden  
Utilizzare questa barra di guida solo quando è usata una guidanastro a molla

### FORM

R: As shown in drawing / Gemäß zeichnung / Come a disegno

L: Opposite to drawing / Spiegelverkehrt / Opposto al disegno

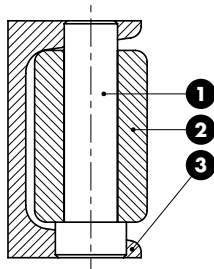
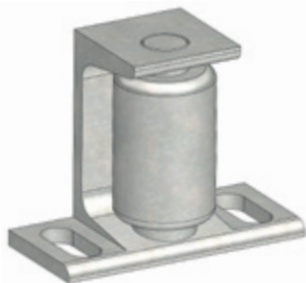
N: No counter bore / Ohne Langloch / Senza asole



**FORD CODE**      **FORM**  
**WDX3-70-0506**      **R**

FORD CODE	H
WDX3-70-0505 + FORM	25
WDX3-70-0506 + FORM*	50

**COIL GUIDE ROLLER - BANDFÜHRUNG - GUIDANASTRO**



**Notes**

**2** Material: Steel - HRC: 58÷60

**1 3** Material: Steel



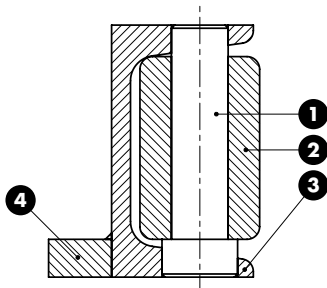
FORD CODE

WDX3-70-2001-A

FORD CODE

WDX3-70-2001-A

**COIL GUIDE ROLLER - BANDFÜHRUNG - GUIDANASTRO**



**Notes**

**2** Material: Steel - HRC: 58÷60

**1 3 4** Material: Steel



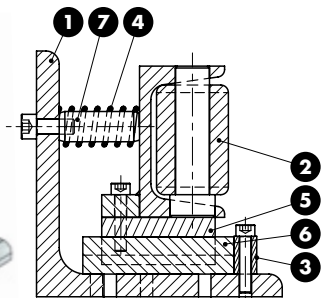
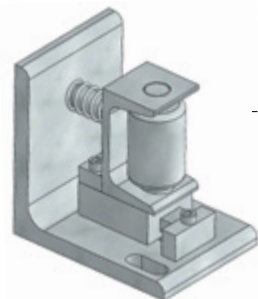
FORD CODE

WDX3-70-2002-A

FORD CODE

WDX3-70-2002-A

**COIL GUIDE ROLLER - BANDFÜHRUNG - GUIDANASTRO MOBILE**



**Notes**

**2** WDX3-70-2202-A

**1 3 4** Material: Steel

**5 6 7**



FORD CODE

WDX3-70-2101-A

FORD CODE

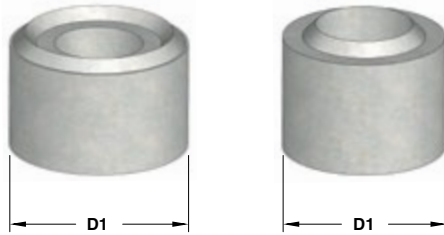
WDX3-70-2101-A

**VISUAL LOCATOR SETTING PUNCH - ENDKONTROLLSTEMPEL - PUNZONE DI VISUALIZZAZIONE**

**Notes**

**Material:** X155CrVMo  
**HRC:** 58÷60

**STOCK**



<b>FORD CODE</b>	
WDX3-80-2402	

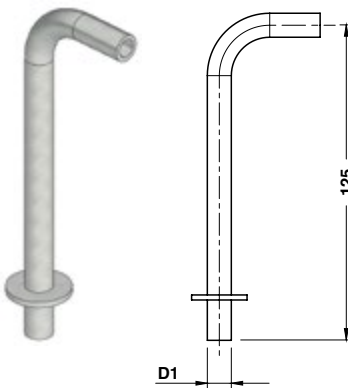
FORD CODE	D1
WDX3-80-2401	30
WDX3-80-2402	25

**AIR RELIEF TUBING - TUBE - TUBO SFOGO ARIA**

**Notes**

**Material:** Steel

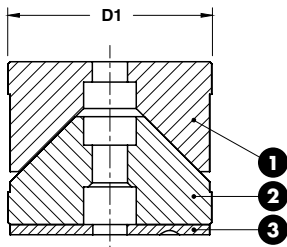
**STOCK**



<b>FORD CODE</b>	
WDX4-70-0201-S	

FORD CODE	D1
WDX4-70-0201-S	9.52
WDX4-70-0202-S	6.35

**LOCATING CONE - KEGELDISTANZ - CONO DI CENTRAGGIO**



**Notes**

**1 2** Material: 16MnCr5  
HRC: 58÷60

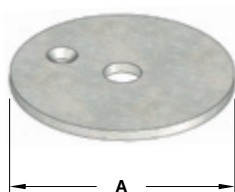
**3** Material: Si37



<b>FORD CODE</b>	
WDX4-70-0401-A	

FORD CODE	D1
WDX4-70-0301-A	100
WDX4-70-0401-A	75

**DISTANCE PLATE - ABSTIMMSCHEIBE - DISTANZIALE**



**Notes**

Material: Si37



<b>FORD CODE</b>	
WDX4-70-0502	

FORD CODE	A	For cone assembly
WDX4-70-0501	73	WDX4-70-0401-A
WDX4-70-0502	98	WDX4-70-0301-A

LOCATING CONE - ZENTRIERBOLZEN - CENTRAGGIO



Notes

**Material:** CK45  
 Only for replacement  
 Nur für Reparatur  
 Solo per riparazione

STOCK



FORD CODE

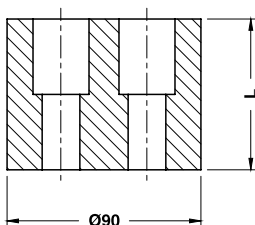
WDX4-70-0801

FORD CODE

WDX4-70-0801

Standard Ford

UPPER DISTANCE BLOCK - OBERER ABSTANDBLOCK - DISTANZIALE



STOCK

Notes

**Material:** CK45



FORD CODE

WDX4-70-12070

FORD CODE

L Screw DIN 912

WDX4-70-12070

70

M16X60

WDX4-70-12120

120

M16X100

WDX4-70-12145

145

M16X100

LOWER DISTANCE BLOCK - UNTERER ABSTANDBLOCK - DISTANZIALE



Notes

**Material:** CK45



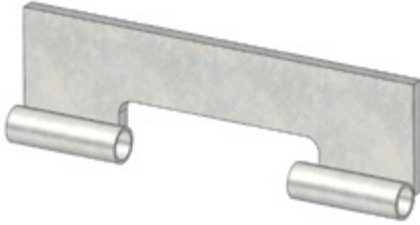
FORD CODE

WDX4-70-1301

FORD CODE

WDX4-70-1301

**DUAL HINGE - SCHARNIERNUT - CERNIERA FEMMINA**



**Notes**

**Material:** St37

**STOCK**



**FORD CODE**

**WDX5-60-3301**

**FORD CODE**

**WDX5-60-3301**

**HINGE - SCHARNIERFEDER - CERNIERA MASCHIO**



**Notes**

**Material:** St37

**STOCK**



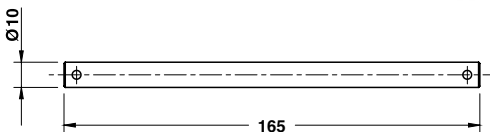
**FORD CODE**

**WDX5-60-3302**

**FORD CODE**

**WDX5-60-3302**

**HINGE PIN - SCHARNIERSTIFT - PERNO**



**Notes**

- 1** **Material:** CK45
- 2** Split Pin, DIN EN ISO 1234 (x2)

**STOCK**



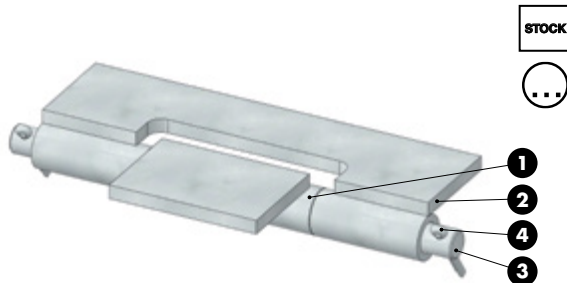
**FORD CODE**

**WDX5-60-3303**

**FORD CODE**

**WDX5-60-3303**

SLIDE BOLT WITH HINGE - BOLZEN MIT SCHARNIER - PERNO CON CERNIERA



Notes	
1	WDX5-60-3301
2	WDX5-60-3302
3	WDX5-60-3303
4	Split Pin, DIN EN ISO 1234 (x2)
ORDER EXAMPLE	FORD CODE
	WDX5-60-3301-A
FORD CODE	
WDX5-60-3301-A	

Standard Ford

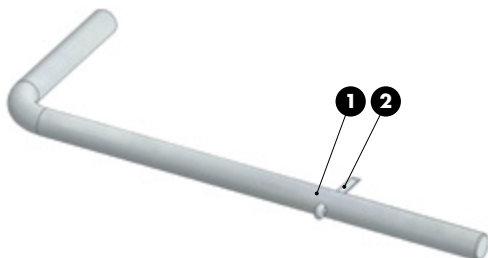
HINGE - SCHARNIERFEDER - CERNIERA



Notes	
<b>Material:</b> St37	
ORDER EXAMPLE	FORD CODE
	WDX5-60-3401
FORD CODE	
WDX5-60-3401	

STOCK

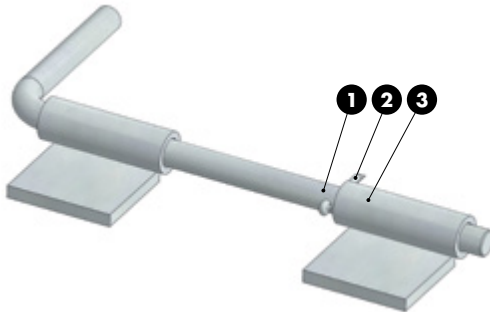
SLIDE BOLT - BOLZEN - PERNO



Notes	
1	<b>Material:</b> St37
2	Split Pin, DIN EN ISO 1234
ORDER EXAMPLE	FORD CODE
	WDX5-60-3420
FORD CODE	
WDX5-60-3420	

STOCK

## SLIDE BOLT WITH HINGE - BOLZEN MIT SCHARNIER - PERNO CON CERNIERA



STOCK



- | Notes |                            |
|-------|----------------------------|
| 1     | WDX5-60-3420               |
| 2     | Split Pin, DIN EN ISO 1234 |
| 3     | WDX5-60-3401               |



FORD CODE

WDX5-60-3401-A

FORD CODE

WDX5-60-3401-A

## HINGE BRACKET - BÜGEL - STAFFA



Notes

Material: S37

STOCK



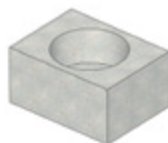
FORD CODE

WDX5-60-3704

FORD CODE

WDX5-60-3704

## MATRIX RETAINER - HALTESTÜCK - RITEGNO PER MATRICE



Notes

Material: CK45

STOCK



FORD CODE

WDX5-61-0901

FORD CODE

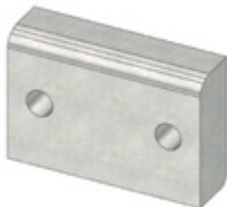
WDX5-61-0901

**POSITIVE RETURN WEAR PLATE - PLATTE - PIASTRA DI REAZIONE**

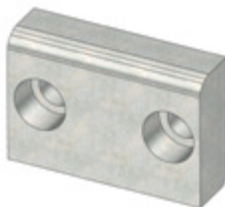
**Notes**

**Material:** CK45 - **HRC:** 58±60

**STOCK**



**WDX7-60-1101**



**WDX7-60-1102**



<b>FORD CODE</b>
<b>WDX7-60-1102</b>

<b>FORD CODE</b>
<b>WDX7-60-1101</b>
<b>WDX7-60-1102</b>

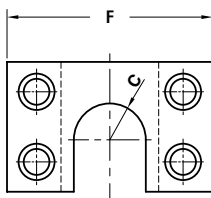
Standard Ford

**COUPLING PLATE - BEFESTIGUNGSPLATTE - STAFFA DI REAZIONE**

**Notes**

**Material:** CK45

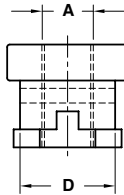
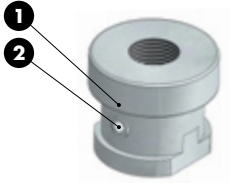
**STOCK**



<b>FORD CODE</b>
<b>WDX7-60-1702</b>

<b>FORD CODE</b>	<b>F</b>	<b>C</b>
<b>WDX7-60-1701</b>	80	14
<b>WDX7-60-1702</b>	100	20
<b>WDX7-60-1703</b>	120	25
<b>WDX7-60-1704</b>	150	33

COUPLING NUT - KUPPLUNGSMUTTER - AGGANCIO STAFFA



Notes

- 1 **Material:** CK45
- 2 Spring-type straight pin  
DIN EN ISO 8752

STOCK



FORD CODE  
WDX7-60-1803

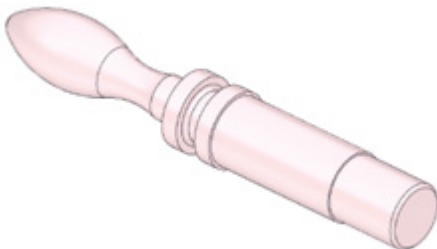
FORD CODE	A	D
WDX7-60-1802	M12x1.25	25
WDX7-60-1803	M16x1.5	37
WDX7-60-1804	M20x1.5	37
WDX7-60-1808	M27x2	37
WDX7-60-1806	M36x2	47
WDX7-60-1807	M42x2	59

HOLDBACK PIN - HANDGRIFF - IMPUGNATURA

Notes

**Material:** Teflon

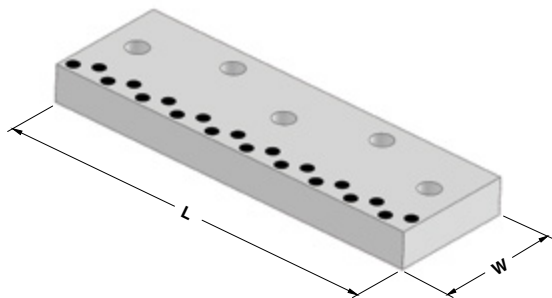
STOCK



FORD CODE  
WDX7-60-1901

FORD CODE
WDX7-60-1901

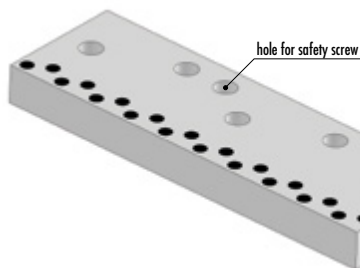
**WEAR PLATE STEEL SELF-LUBRICATING  
DECKLEISTE STAHL MIT FESTSCHMIERSTOFF  
PIASTRA GUIDA IN ACCIAIO AUTOLUBRIFICANTE**



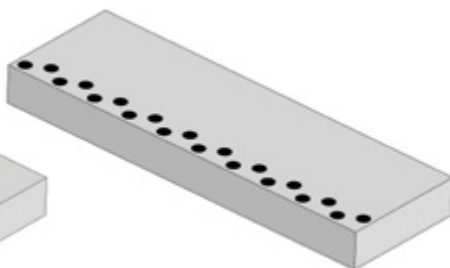
**Notes**  
**Material:** CK45 + Graphite  
**HRC:** 58÷60



Standard Ford



**OPTION S**



**OPTION N**

**OPTION**

S: With holes and hole for safety screw / mit Löchern und Bohrung für Sicherheitsschrauben / Con fori e foro per vite di sicurezza

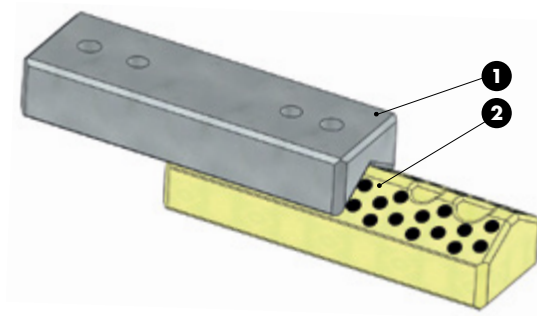
N: Without holes / Ohne Löcher / Senza fori



FORD CODE	OPTION
WDX7-65-01075253	S

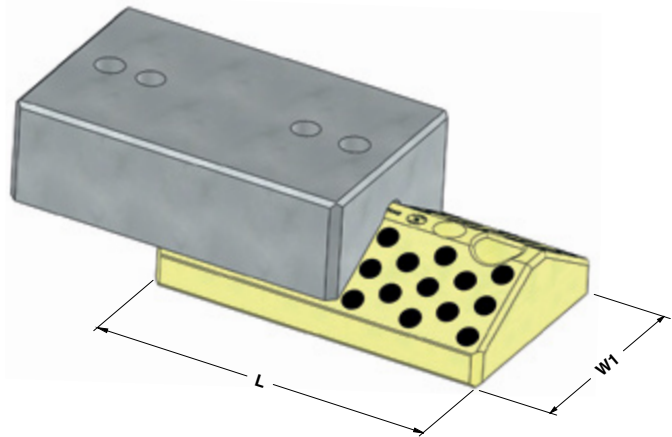
FORD CODE	W	L	Holes	FORD CODE	W	L	Holes
WDX7-65-01075200	75	200	3	WDX7-65-01125200	125	200	3
WDX7-65-01075253	75	250	3	WDX7-65-01125253	125	250	3
WDX7-65-01075315	75	315	5	WDX7-65-01125315	125	315	5
WDX7-65-01075350	75	350	5	WDX7-65-01125350	125	350	5
WDX7-65-01075400	75	400	5	WDX7-65-01125400	125	400	5
WDX7-65-01075450	75	450	5	WDX7-65-01125450	125	450	5
WDX7-65-01100200	100	200	3	WDX7-65-01150200	150	200	3
WDX7-65-01100253	100	250	3	WDX7-65-01150253	150	250	3
WDX7-65-01100315	100	315	5	WDX7-65-01150315	150	315	5
WDX7-65-01100350	100	350	5	WDX7-65-01150350	150	350	5
WDX7-65-01100400	100	400	5	WDX7-65-01150400	150	400	5
WDX7-65-01100450	100	450	5	WDX7-65-01150450	150	450	5

"V" DRIVER - PRISMENFÜHRUNG - GUIDA A "V"



Notes

- 1 **Material:** CK45  
**HRC:** 58÷60
- 2 **Material:** Bronze + Graphite  
**HB** > 190

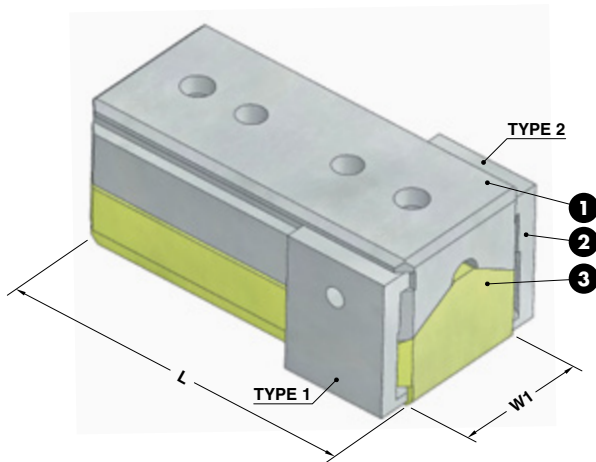


FORD CODE

WDX7-65-03065200

FORD CODE	W1	H1	L
WDX7-65-03065150	65	65	150
WDX7-65-03065200	65	65	200
WDX7-65-03065250	65	65	250
WDX7-65-03065300	65	65	300
WDX7-65-03125150	125	85	150
WDX7-65-03125200	125	85	200
WDX7-65-03125250	125	85	250
WDX7-65-03125300	125	85	300

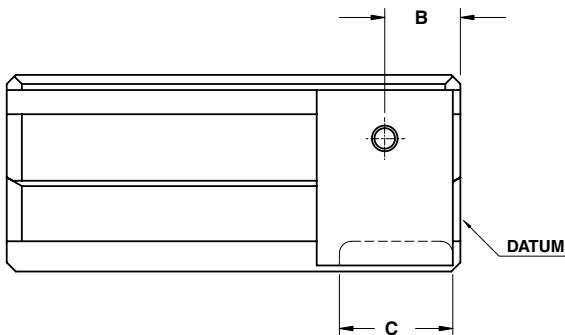
**"V" DRIVER WITH POSITIVE RETURN**  
**PRISMENFÜHRUNG MIT ZWANGSRÜCKHOLER**  
**GUIDA A "V" CON GANCIO DI RITORNO**



- Notes**
- 1 **Material:** CK45 - HRC: 58÷60
  - 2 **Material:** 42CrMo4
  - 3 **Material:** Bronze + Graphite  
HB > 190



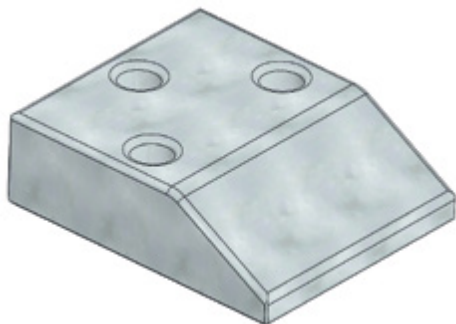
Standard Ford



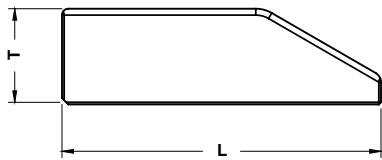
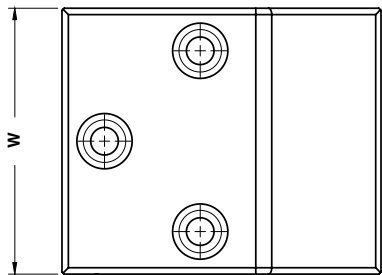
<b>FORD CODE</b>	<b>B=26</b>	<b>C=24</b>
WDX7-65-05112-A	B26	C24

FORD CODE	W1	L	Clamp	FORD CODE	W1	L	Clamp
WDX7-65-05111-A	65	150	RIGHT	WDX7-65-05211-A	125	150	RIGHT
WDX7-65-05112-A	65	150	LEFT	WDX7-65-05212-A	125	150	LEFT
WDX7-65-05113-A	65	150	BOTH	WDX7-65-05213-A	125	150	BOTH
WDX7-65-05121-A	65	200	RIGHT	WDX7-65-05221-A	125	200	RIGHT
WDX7-65-05122-A	65	200	LEFT	WDX7-65-05222-A	125	200	LEFT
WDX7-65-05123-A	65	200	BOTH	WDX7-65-05223-A	125	200	BOTH
WDX7-65-05131-A	65	250	RIGHT	WDX7-65-05231-A	125	250	RIGHT
WDX7-65-05132-A	65	250	LEFT	WDX7-65-05232-A	125	250	LEFT
WDX7-65-05133-A	65	250	BOTH	WDX7-65-05233-A	125	250	BOTH
WDX7-65-05141-A	65	300	RIGHT	WDX7-65-05241-A	125	300	RIGHT
WDX7-65-05142-A	65	300	LEFT	WDX7-65-05242-A	125	300	LEFT
WDX7-65-05143-A	65	300	BOTH	WDX7-65-05243-A	125	300	BOTH

**CAM DWELL WEAR PLATE STEEL**  
**UBERLAUFKEILE STAHL**  
**CUNEO IN ACCIAIO**



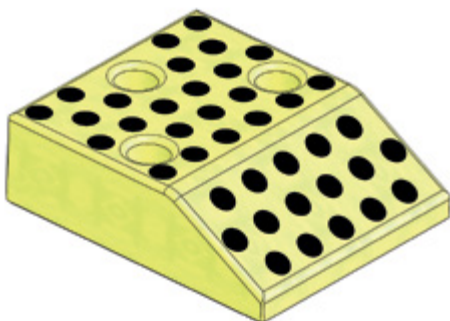
**Notes**  
**Material:** 20MnCr5  
**HRC:** 56÷60



**FORD CODE**  
**WDX7-65-09100150X**

FORD CODE	T	W	L
WDX7-65-09100125X	30	100	125
WDX7-65-09100150X	45	100	150
WDX7-65-09100170X	60	100	170
WDX7-65-09125125X	30	125	125
WDX7-65-09125150X	45	125	150
WDX7-65-09125170X	60	125	170
WDX7-65-09160125X	30	160	125
WDX7-65-09160150X	45	160	150
WDX7-65-09160170X	60	160	170

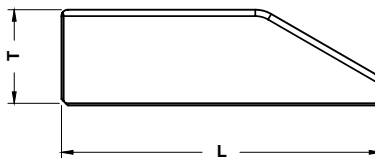
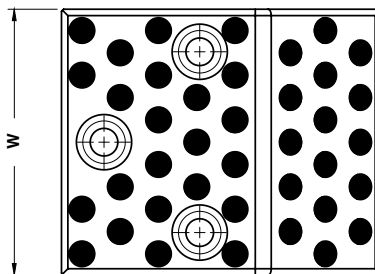
**CAM DWELL WEAR PLATE SELF-LUBRICATING  
UBERLAUFKEILE BRONZE MIT FESTSCHMIERSTOFF  
CUNEO AUTOLUBRIFICANTE**



**Notes**  
**Material:** Bronze + Graphite  
**HB > 190**

STOCK

Standard Ford



**ORDER EXAMPLE**  
**FORD CODE**  
WDX7-65-09100150Y

FORD CODE	T	W	L
WDX7-65-09100125Y	30	100	125
WDX7-65-09100150Y	45	100	150
WDX7-65-09100170Y	60	100	170
WDX7-65-09125125Y	30	125	125
WDX7-65-09125150Y	45	125	150
WDX7-65-09125170Y	60	125	170
WDX7-65-09160125Y	30	160	125
WDX7-65-09160150Y	45	160	150
WDX7-65-09160170Y	60	160	170

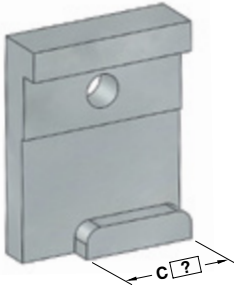
**POSITIVE RETURN - ZWANGRÜCKHOLER - GANCIO**

**Notes**

**Material:** CK45 - HRC: 28÷30



**TYPE 1**



**TYPE 2**



FORD CODE	TYPE	C=24
WDX7-65-0445	1	C24

**FORD CODE**

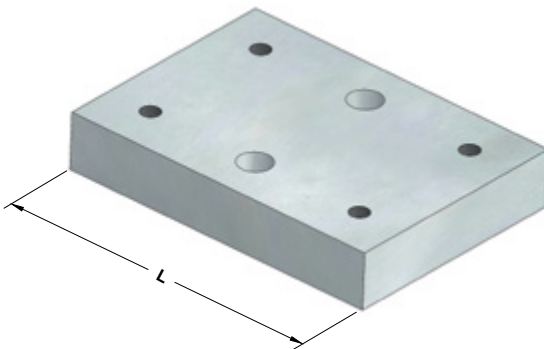
WDX7-65-0445

**CAM SLIDE COVER PLATE - DECKLEISTE FÜR SCHIEBER - SUPPORTO PER CAMME**

**Notes**

**Material:** S137

**STOCK**



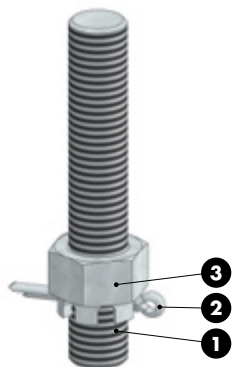
FORD CODE
WDX7-65-11175125

**FORD CODE**

**L**

WDX7-65-11175100	100
WDX7-65-11175125	125
WDX7-65-11175160	160
WDX7-65-11175200	200

**UPPER CAM SAFETY SCREW  
SICHERHEITSCHRAUBE FÜR OBERSCHIEBER  
TIRANTE DI SICUREZZA**



Max load= 1000 kg

**Notes**

- 1 M16 x 100 - DIN 975 cl. 8.8
- 2 DIN EN ISO 1234 - 4x32
- 3 DIN 935 cl. 8.8



FORD CODE

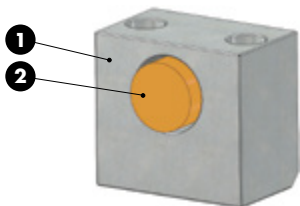
WDX7-70-1001-A

FORD CODE

WDX7-70-1001-A

Standard Ford

**SLIDE STOP BLOCK - SCHIEBERRANSCHLAG - ARRESTO SLITTA**



**Notes**

- 1 **Material:** CK45
- 2 **Material:** Urethan 90 SH



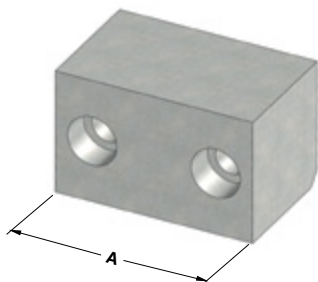
FORD CODE

WDX7-70-1536

FORD CODE

WDX7-70-1536

## STOP BLOCK - ANSCHLAG - BLOCCHETTO DI ARRESTO



### Notes

**Material:** CK45

**STOCK**

\*Eigesezt mit nockendämpfer  
Usato con cam buffer



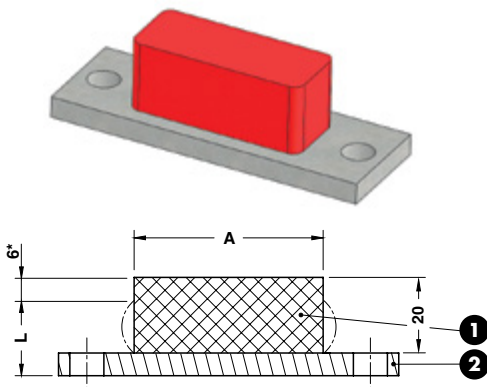
**FORD CODE**

WDX7-70-16130

FORD CODE	A	Used with cam buffer*
WDX7-70-16080	80	WDX7-60-1501
WDX7-70-16130	130	WDX7-60-1502

# WDX7-70

## CAM BUFFER - ANSCHLAG - ARRESTO



### Notes

**1 Material:** Polyurethane 90 SH

**2 Material:** St37

**STOCK**

\*Max. deflection  
Max. zul. Federweg  
Deflessione massima

\*\*Gegenkraft bei 6mm max. zul. Federweg  
Max. reaction force with 6 mm deflection  
Forza di reazione massima per deflessione di 6mm

\*\*\*Maximal absorbierte Energie bei 6 mm max. zul. Federweg  
Massima energia assorbita con deflessione di 6 mm

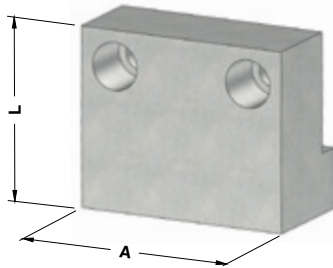


**FORD CODE**

WDX7-70-18100

FORD CODE	A	Force for length "L" (kN)**	Max energy absorbtion with 6 mm deflection (J)***
WDX7-70-18050	50	10	30
WDX7-70-18100	100	20	60

## BUFFER SUPPORT - DÄMPFERHALTERUNG - SUPPORTO AMMORTIZZATORE



### Notes

**Material:** CK45

**STOCK**

\*Eigsetz mit nockendämpfer  
Usato con cam buffer



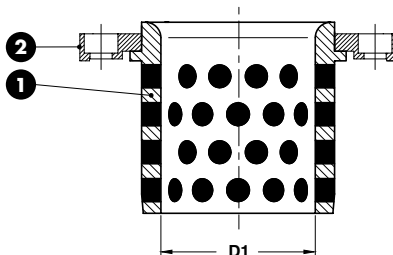
<b>FORD CODE</b>	L=?
WDX7-70-19140	L100

FORD CODE	A	Used with cam buffer*
WDX7-70-19090	90	WDX7-70-18050
WDX7-70-19140	140	WDX7-70-18100

Standard Ford

# WDX13-60

## GUIDE BUSH NAAMS - FÜHRUNGSBUCHSE NAAMS - BOCCOLA AUTOLUBRIFICANTE NAAMS



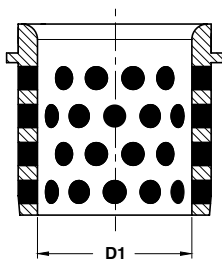
### Notes

- Material:** Bronze + Graphite  
HB > 190
- Material:** CK45 - WDX13-60-1001



<b>FORD CODE</b>
WDX13-60-08032-A

FORD CODE	D1	Toe clamp qty.
WDX13-60-08025-A	25	1
WDX13-60-08032-A	32	1
WDX13-60-08040-A	40	1
WDX13-60-08050-A	50	1
WDX13-60-08063-A	63	2
WDX13-60-08080-A	80	2
WDX13-60-08100-A	100	2
WDX13-60-08125-A	125	2



### Notes

**Material:** Bronze + Graphite  
**HB** > 190

STOCK



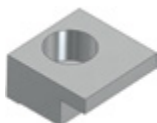
### FORD CODE

WDX13-60-08032

### FORD CODE

### D1

WDX13-60-08025	25
WDX13-60-08032	32
WDX13-60-08040	40
WDX13-60-08050	50
WDX13-60-08063	63
WDX13-60-08080	80
WDX13-60-08100	100
WDX13-60-08125	125



### Notes

**Material:** CK45

STOCK



### FORD CODE

WDX13-60-1001

### FORD CODE

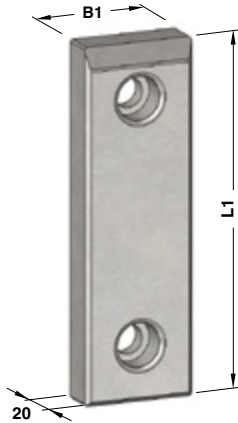
WDX13-60-1001

WEAR PLATE STEEL - GLEITPLATTE STAHL - PIASTRA GUIDA IN ACCIAIO

Notes

**Material:** 16MnCr5  
**HRC:** 58÷60

STOCK



FORM A



FORM B



FORM C

Standard Ford



FORD CODE

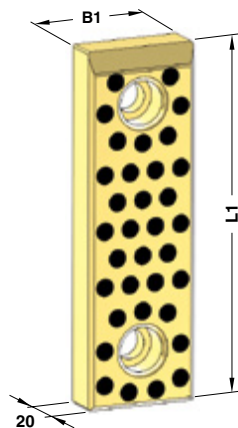
WDX13-65-01050125X

FORD CODE	B1	L1	FORM	FORD CODE	B1	L1	FORM
WDX13-65-01050100X	50	100	A	WDX13-65-01100250X	100	250	A
WDX13-65-01050125X	50	125	A	WDX13-65-01100315X	100	315	A
WDX13-65-01050160X	50	160	A	WDX13-65-01125100X	125	100	C
WDX13-65-01050200X	50	200	A	WDX13-65-01125125X	125	125	C
WDX13-65-01080100X	80	100	A	WDX13-65-01125160X	125	160	C
WDX13-65-01080125X	80	125	A	WDX13-65-01125200X	125	200	C
WDX13-65-01080160X	80	160	A	WDX13-65-01125250X	125	250	C
WDX13-65-01080200X	80	200	A	WDX13-65-01125315X	125	315	C
WDX13-65-01080250X	80	250	A	WDX13-65-01160100X	160	100	C
WDX13-65-01080315X	80	315	A	WDX13-65-01160125X	160	125	C
WDX13-65-01100050X	100	50	B	WDX13-65-01160160X	160	160	C
WDX13-65-01100100X	100	100	A	WDX13-65-01160200X	160	200	C
WDX13-65-01100125X	100	125	A	WDX13-65-01160250X	160	250	C
WDX13-65-01100160X	100	160	A	WDX13-65-01160315X	160	315	C
WDX13-65-01100200X	100	200	A				

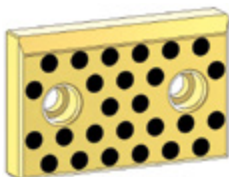
## WEAR PLATE SELF-LUBRICATING GLEITPLATTE BRONZE MIT FESTSCHMIERSTOFF PIASTRA GUIDA AUTOLUBRIFICANTE

### Notes

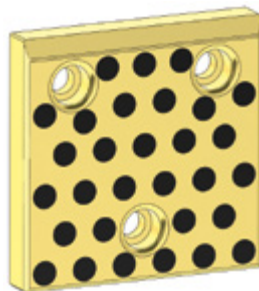
**Material:** Bronze + Graphite  
**HB** > 190



**FORM A**



**FORM B**



**FORM C**

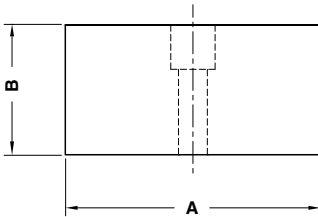
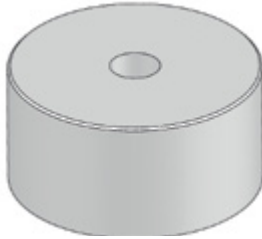


### FORD CODE

WDX13-65-01050125Y

FORD CODE	B1	L1	FORM	FORD CODE	B1	L1	FORM
WDX13-65-01050100Y	50	100	A	WDX13-65-01100250Y	100	250	A
WDX13-65-01050125Y	50	125	A	WDX13-65-01100315Y	100	315	A
WDX13-65-01050160Y	50	160	A	WDX13-65-01125100Y	125	100	C
WDX13-65-01050200Y	50	200	A	WDX13-65-01125125Y	125	125	C
WDX13-65-01080100Y	80	100	A	WDX13-65-01125160Y	125	160	C
WDX13-65-01080125Y	80	125	A	WDX13-65-01125200Y	125	200	C
WDX13-65-01080160Y	80	160	A	WDX13-65-01125250Y	125	250	C
WDX13-65-01080200Y	80	200	A	WDX13-65-01125315Y	125	315	C
WDX13-65-01080250Y	80	250	A	WDX13-65-01160100Y	160	100	C
WDX13-65-01080315Y	80	315	A	WDX13-65-01160125Y	160	125	C
WDX13-65-01100050Y	100	50	B	WDX13-65-01160160Y	160	160	C
WDX13-65-01100100Y	100	100	A	WDX13-65-01160200Y	160	200	C
WDX13-65-01100125Y	100	125	A	WDX13-65-01160250Y	160	250	C
WDX13-65-01100160Y	100	160	A	WDX13-65-01160315Y	160	315	C
WDX13-65-01100200Y	100	200	A				

STOP BLOCK - ABSTANDSBLOCK - DISTANZIALE



Notes

**Material:** CK45  
 Only for replacement  
 Nur für Reparatur  
 Solo per riparazione

STOCK

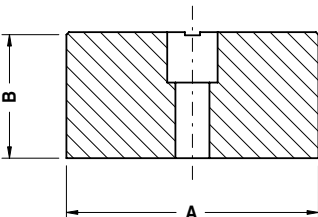


FORD CODE		
WDX13-65-04060		

FORD CODE	A	B
WDX13-65-04040	40	30
WDX13-65-04060	60	50
WDX13-65-04100	100	50
WDX13-65-04152	152	50

Standard Ford

STOP BLOCK - ABSTANDSBLOCK - DISTANZIALE



Notes

**Material:** CK45

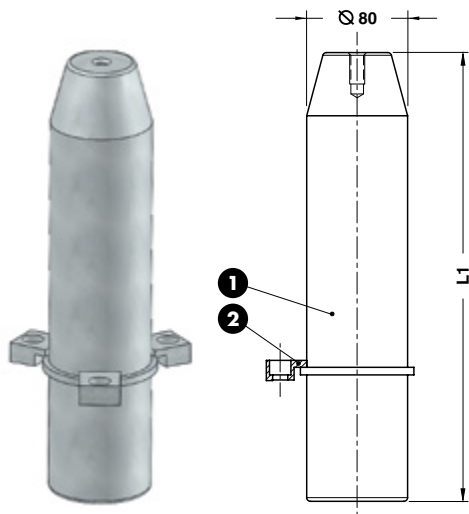
STOCK



FORD CODE		
WDX13-65-04060 1		

FORD CODE	A	B
WDX13-65-04040 1	40	30
WDX13-65-04060 1	60	50
WDX13-65-04100 1	100	50
WDX13-65-04152 1	152	50

## GUIDE POST - FÜHRUNGSSÄULE - COLONNA GUIDA



### Notes

- 1 **Material:** 16MnCr5  
**HRC:** 58÷60
- 2 **Material:** CK45  
WDX13-60-1001

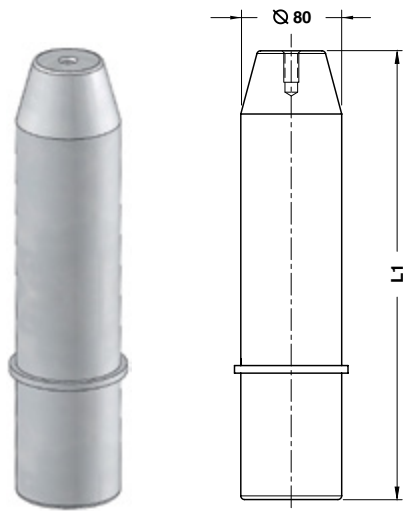


### FORD CODE

WDX13-65-10080355-A

FORD CODE	L1	Toe clamp qty.
WDX13-65-10080315-A	315	3
WDX13-65-10080355-A	355	3
WDX13-65-10080400-A	400	3

## GUIDE POST - FÜHRUNGSSÄULE - COLONNA GUIDA



### Notes

- Material:** 16MnCr5  
**HRC:** 58÷60

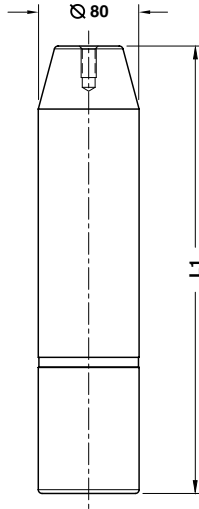


### FORD CODE

WDX13-65-10080355

FORD CODE	L1
WDX13-65-10080315	315
WDX13-65-10080355	355
WDX13-65-10080400	400

GUIDE POST - FÜHRUNGSSÄULE - COLONNA GUIDA



Notes

**Material:** 16MnCr5  
**HRC:** 58÷60



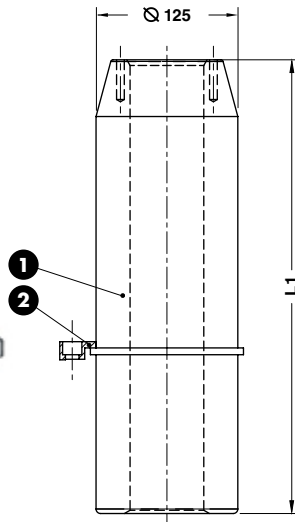
FORD CODE

WDX13-65-11080355

FORD CODE	L1
WDX13-65-11080315	315
WDX13-65-11080355	355
WDX13-65-11080400	400

Standard Ford

GUIDE POST - FÜHRUNGSSÄULE - COLONNA GUIDA



Notes

- Material:** 16MnCr5  
**HRC:** 60÷62
- Material:** CK45  
WDX13-60-1001

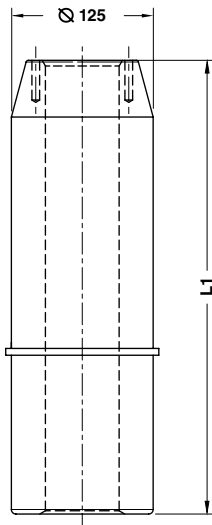


FORD CODE

WDX13-65-12125450-A

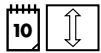
FORD CODE	L1	Toe clamp qty.
WDX13-65-12125400-A	400	3
WDX13-65-12125450-A	450	3
WDX13-65-12125500-A	500	3

**GUIDE POST - FÜHRUNGSSÄULE - COLONNA GUIDA**



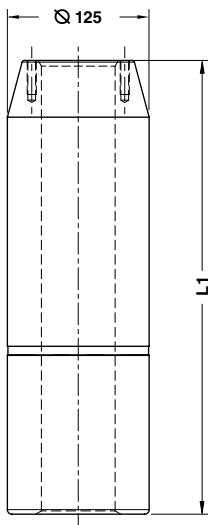
**Notes**

**Material:** 16MnCr5  
**HRC:** 60÷62



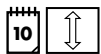
<b>ORDER EXAMPLE</b> 	<b>FORD CODE</b>
	<b>WDX13-65-12125450</b>
<b>FORD CODE</b>	<b>L1</b>
<b>WDX13-65-12125400</b>	400
<b>WDX13-65-12125450</b>	450
<b>WDX13-65-12125500</b>	500

**GUIDE POST - FÜHRUNGSSÄULE - COLONNA GUIDA**



**Notes**

**Material:** 16MnCr5  
**HRC:** 60÷62



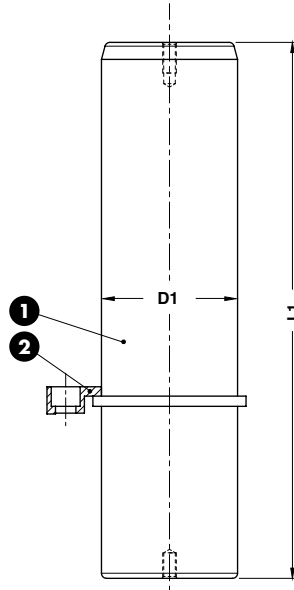
<b>ORDER EXAMPLE</b> 	<b>FORD CODE</b>
	<b>WDX13-65-13125450</b>
<b>FORD CODE</b>	<b>L1</b>
<b>WDX13-65-13125400</b>	400
<b>WDX13-65-13125450</b>	450
<b>WDX13-65-13125500</b>	500

## GUIDE POST NAAMS - FÜHRUNGSSÄULE NAAMS - COLONNA GUIDA NAAMS



**Notes**

- 1 **Material:** 16MnCr5  
**HRC:** 60÷62
- 2 **Material:** CK45  
WDX13-60-1001



<b>FORD CODE</b>
WDX13-65-20025160-A

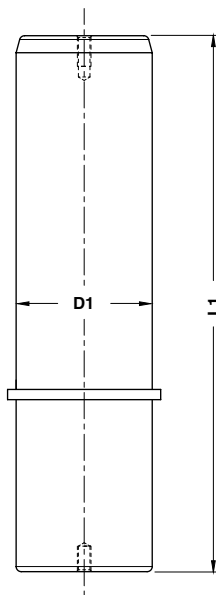
FORD CODE	D1	L1	Toe clamp qty.	FORD CODE	D1	L1	Toe clamp qty.
WDX13-65-20025140-A	25	140	2	WDX13-65-20050315-A	50	315	2
WDX13-65-20025160-A	25	160	2	WDX13-65-20063200-A	63	200	3
WDX13-65-20025180-A	25	180	2	WDX13-65-20063224-A	63	224	3
WDX13-65-20032140-A	32	140	2	WDX13-65-20063250-A	63	250	3
WDX13-65-20032160-A	32	160	2	WDX13-65-20063280-A	63	280	3
WDX13-65-20032180-A	32	180	2	WDX13-65-20063315-A	63	315	3
WDX13-65-20032200-A	32	200	2	WDX13-65-20063355-A	63	355	3
WDX13-65-20040160-A	40	160	2	WDX13-65-20063400-A	63	400	3
WDX13-65-20040180-A	40	180	2	WDX13-65-20080250-A	80	250	3
WDX13-65-20040200-A	40	200	2	WDX13-65-20080280-A	80	280	3
WDX13-65-20040224-A	40	224	2	WDX13-65-20080315-A	80	315	3
WDX13-65-20040250-A	40	250	2	WDX13-65-20080355-A	80	355	3
WDX13-65-20050160-A	50	160	2	WDX13-65-20080400-A	80	400	3
WDX13-65-20050180-A	50	180	2	WDX13-65-20080500-A	80	500	3
WDX13-65-20050200-A	50	200	2	WDX13-65-20100315-A	100	315	3
WDX13-65-20050224-A	50	224	2	WDX13-65-20100355-A	100	355	3
WDX13-65-20050250-A	50	250	2	WDX13-65-20100400-A	100	400	3
WDX13-65-20050280-A	50	280	2	WDX13-65-20100500-A	100	500	3

Standard Ford

## GUIDE POST NAAMS - FÜHRUNGSSÄULE NAAMS - COLONNA GUIDA NAAMS



**Notes**  
**Material:** 16MnCr5  
**HRC:** 60±62



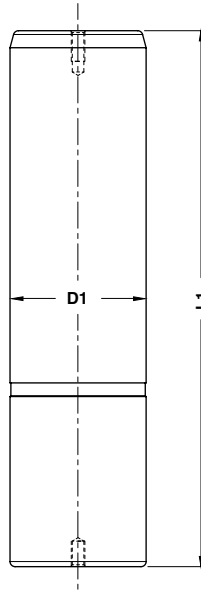
**FORD CODE**  
**WDX13-65-20025160**

FORD CODE	D1	L1	FORD CODE	D1	L1
WDX13-65-20025140	25	140	WDX13-65-20050315	50	315
WDX13-65-20025160	25	160	WDX13-65-20063200	63	200
WDX13-65-20025180	25	180	WDX13-65-20063224	63	224
WDX13-65-20032140	32	140	WDX13-65-20063250	63	250
WDX13-65-20032160	32	160	WDX13-65-20063280	63	280
WDX13-65-20032180	32	180	WDX13-65-20063315	63	315
WDX13-65-20032200	32	200	WDX13-65-20063355	63	355
WDX13-65-20040160	40	160	WDX13-65-20063400	63	400
WDX13-65-20040180	40	180	WDX13-65-20080250	80	250
WDX13-65-20040200	40	200	WDX13-65-20080280	80	280
WDX13-65-20040224	40	224	WDX13-65-20080315	80	315
WDX13-65-20040250	40	250	WDX13-65-20080355	80	355
WDX13-65-20050160	50	160	WDX13-65-20080400	80	400
WDX13-65-20050180	50	180	WDX13-65-20080500	80	500
WDX13-65-20050200	50	200	WDX13-65-20100315	100	315
WDX13-65-20050224	50	224	WDX13-65-20100355	100	355
WDX13-65-20050250	50	250	WDX13-65-20100400	100	400
WDX13-65-20050280	50	280	WDX13-65-20100500	100	500

**GUIDE POST NAAMS - FÜHRUNGSSÄULE NAAMS - COLONNA GUIDA NAAMS**



**Notes**  
**Material:** 16MnCr5  
**HRC:** 60±62



Standard Ford



**FORD CODE**  
**WDX13-65-22025160**

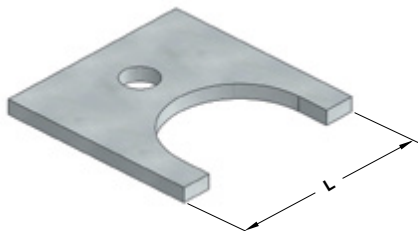
FORD CODE	D1	L1	FORD CODE	D1	L1
WDX13-65-22025140	25	140	WDX13-65-22050315	50	315
WDX13-65-22025160	25	160	WDX13-65-22063200	63	200
WDX13-65-22025180	25	180	WDX13-65-22063224	63	224
WDX13-65-22032140	32	140	WDX13-65-22063250	63	250
WDX13-65-22032160	32	160	WDX13-65-22063280	63	280
WDX13-65-22032180	32	180	WDX13-65-22063315	63	315
WDX13-65-22032200	32	200	WDX13-65-22063355	63	355
WDX13-65-22040160	40	160	WDX13-65-22063400	63	400
WDX13-65-22040180	40	180	WDX13-65-22080250	80	250
WDX13-65-22040200	40	200	WDX13-65-22080280	80	280
WDX13-65-22040224	40	224	WDX13-65-22080315	80	315
WDX13-65-22040250	40	250	WDX13-65-22080355	80	355
WDX13-65-22050160	50	160	WDX13-65-22080400	80	400
WDX13-65-22050180	50	180	WDX13-65-22080500	80	500
WDX13-65-22050200	50	200	WDX13-65-22100315	100	315
WDX13-65-22050224	50	224	WDX13-65-22100355	100	355
WDX13-65-22050250	50	250	WDX13-65-22100400	100	400
WDX13-65-22050280	50	280	WDX13-65-22100500	100	500

## RETAINER PLATE - PLATTE - PIASTRA

### Notes

**Material:** Si37

STOCK



**FORD CODE**

**WDX14-60-0135**

FORD CODE	L	Pin Size
WDX14-60-0125	40	25
WDX14-60-0135	50	35
WDX14-60-0150	60	50
WDX14-60-0155	70	55
WDX14-60-0163	80	63

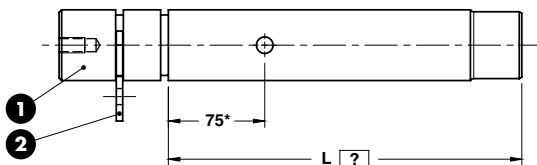
## PAD RETAINER PIN - STECKBOLZEN - PERNO DI ARRESTO



Respect the max. load  
 Maximale Nutzlast beachten  
 Rispettare il carico max.

### Notes

- Material:** CK45
- Material:** Si37  
WDX14-60-0155



\*Only with L>500, supplied with safety pin WDX14-60-0280

Nur für L>500, mit Stift zugeführt WDX14-60-0280

Solo per L>500, fornito con perno di sicurezza WDX14-60-0280

\*\* Allowable load for pin under static load

Zulässigel gewicht für bolzen unter statischer belastung

Carico ammissibile per perno sottoposto a carico statico



**FORD CODE**

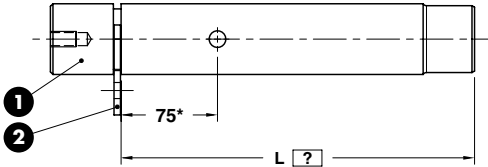
**L=275**

**WDX14-60-025501-A**

**L275**

FORD CODE	Load per pin** (kg)
WDX14-60-025501-A	5200

PAD RETAINER PIN - STECKBOLZEN - PERNO DI ARRESTO



\*Only with L>500, supplied with safety pin WDX14-60-0280  
 Nur für L>500, mit Stift zugeführt WDX14-60-0280  
 Solo per L>500, fornito con perno di sicurezza WDX14-60-0280

\*\* Allowable load for pin under static load  
 Zulässigel gewicht für bolzen unter statischer belastung  
 Carico ammissibile per perno sottoposto a carico statico



Respect the max. load  
 Maximale Nutzlast beachten  
 Rispettare il carico max.

Notes

- 1 **Material:** CK45
- 2 **Material:** St37  
WDX14-60-0155



ORDER EXAMPLE	FORD CODE	L=275
	WDX14-60-025502-A	L275
FORD CODE		Load per pin**(kg)
WDX14-60-025502-A		5200

Standard Ford

SAFETY PIN - STIFT - PERNO DI SICUREZZA



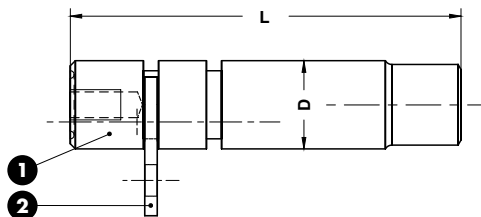
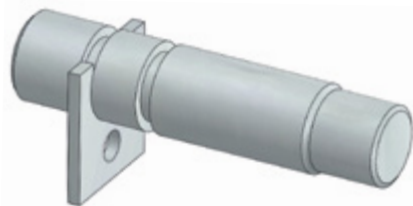
Notes

**Material:** CK45



ORDER EXAMPLE	FORD CODE
	WDX14-60-0280
FORD CODE	
WDX14-60-0280	

## PAD RETAINER PIN - STECKBOLZEN - PERNO DI ARRESTO



Respect the max. load  
Maximale Nutzlast beachten  
Rispettare il carico max.

### Notes

- 1 **Material:** CK45
- 2 **Material:** St37

STOCK



FORD CODE

WDX14-60-0335-A

FORD CODE	Retainer plate (2)	D	L	Load per pin** (kg)
WDX14-60-0325-A	WDX14-60-0125	25	130	1000
WDX14-60-0335-A	WDX14-60-0135	35	155	2500
WDX14-60-0350-A	WDX14-60-0150	50	200	5000
WDX14-60-0363-A	WDX14-60-0163	63	250	8000

\*\*Allowable load for pin under static load  
Zulässige Last für Bolzen unter statischer Belastung  
Carico ammissibile per perno sottoposto a carico statico

## SECURING DISC - SCHEIBE - RONDELLA DI SICUREZZA



### Notes

**Material:** CK45  
Only for replacement  
Nur für Reparatur  
Solo per riparazione

STOCK



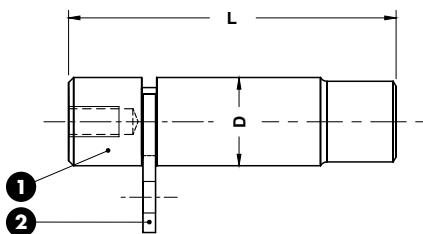
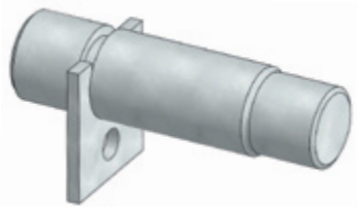
FORD CODE

WDX14-60-0406

FORD CODE

WDX14-60-0406

## PAD RETAINER PIN - STECKBOLZEN - PERNO DI ARRESTO



FORD CODE

WDX14-60-0435-A

FORD CODE	Retainer plate (2)	D	L	Load per pin**(kg)
WDX14-60-0425-A	WDX14-60-0125	25	110	1000
WDX14-60-0435-A	WDX14-60-0135	35	130	2500
WDX14-60-0450-A	WDX14-60-0150	50	170	5000
WDX14-60-0463-A	WDX14-60-0163	63	210	8000



Respect the max. load  
 Maximale Nutzlast beachten  
 Rispettare il carico max.

### Notes

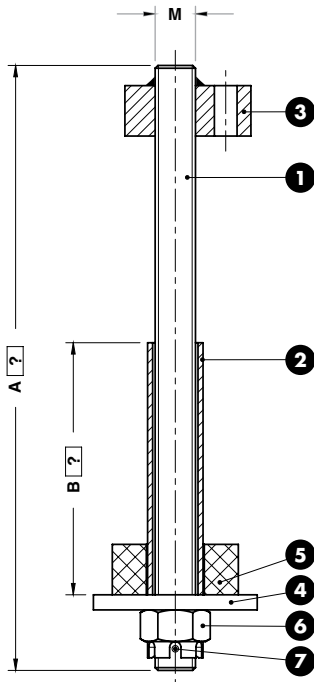
- 1 **Material:** CK45
- 2 **Material:** St37

STOCK



\*\*Allowable load for pin under static load  
 Zulässige gewicht für bolzen unter statischer belastung  
 Carico ammissibile per perno sottoposto a carico statico

## RETAINER BOLT - ZUGBOLZENSATZ - GRUPPO TIRANTE



Respect the max. load  
 Maximale Nutzlast beachten  
 Rispettare il carico max.

### Notes

- 1 **Material:** 36CrNiMo4
- 2 Tube DIN 2391
- 3 **Material:** St37
- 4 **Material:** CK45
- 5 **Material:** Elastomer 92SH
- 6 Hexagon castle nut DIN 935
- 7 Split Pin. DIN EN ISO 1234

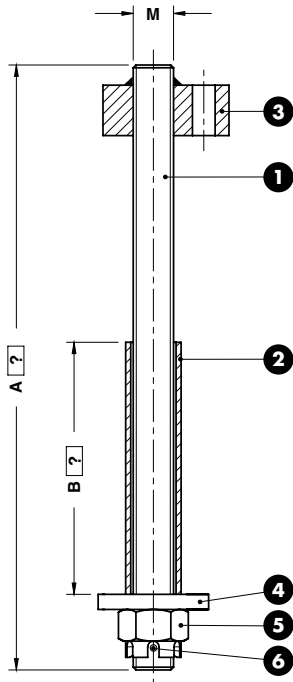


FORD CODE	M=M20	A=290	B=170
WDX14-60-0520	20	A290	B170

FORD CODE	M	Max load (kg)
WDX14-60-0516	M16	250
WDX14-60-0520	M20	450
WDX14-60-0524	M24	750
WDX14-60-0530	M30	1250

\*Drill hole in rod for copper pin at assembly  
 Bohrung für splint durchzuführen bei der montage  
 Foro per coppiglia da eseguire al montaggio

## RETAINER BOLT - ZUGBOLZENSATZ - GRUPPO TIRANTE



Respect the max. load  
 Maximale Nutzlast beachten  
 Rispettare il carico max.

### Notes

- 1 **Material:** 36CrNiMo4
- 2 Tube DIN 2391
- 3 **Material:** St37
- 4 **Material:** CK45
- 5 Hexagon castle nut DIN 935
- 6 Split Pin. DIN EN ISO 1234\*\*



FORD CODE	M=M20	A=290	B=170
WDX14-60-0620	20	A290	B170

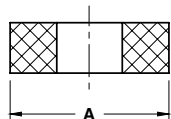
FORD CODE	M	Max load (kg)
WDX14-60-0612	M12	550
WDX14-60-0616	M16	1000
WDX14-60-0620	M20	1400

\*Drill hole in rod for copper pin at assembly  
 Bohrung für Splint durchzuführen bei der Montage  
 Foro per coppiglia da eseguire al montaggio

## WDX14-60

OMCR

### BUFFER - STOSSDÄMPFER - AMMORTIZZATORE



STOCK

#### Notes

**Material:** Elastomer 92 SH



#### FORD CODE

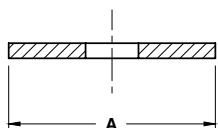
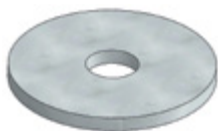
WDX14-60-0902

FORD CODE	Size	A
WDX14-60-0901	M16	50
WDX14-60-0902	M20	63
WDX14-60-0903	M24	80
WDX14-60-0904	M30	100

## WDX14-60

OMCR

### WASHER RETAINER - SCHEIBE - RONDELLA



STOCK

#### Notes

**Material:** CK45



#### FORD CODE

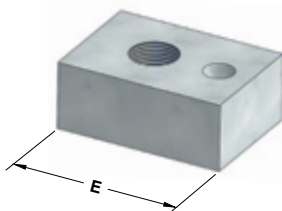
WDX14-60-1002

FORD CODE	Size	A
WDX14-60-1001	M16	65
WDX14-60-1002	M20	82
WDX14-60-1003	M24	105
WDX14-60-1004	M30	130

## WDX14-60

OMCR

### THREADED BLOCK - DÜBEL - TASSELLO



STOCK

#### Notes

**Material:** St37

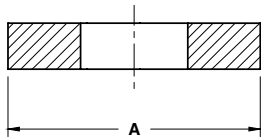


#### FORD CODE

WDX14-60-1007

FORD CODE	Size	E
WDX14-60-1005	M12	25
WDX14-60-1006	M16	35
WDX14-60-1007	M20	40
WDX14-60-1008	M24	45
WDX14-60-1009	M30	50

WASHER RETAINER - SCHEIBE - RONDELLA



Notes

**Material:** CK45

STOCK

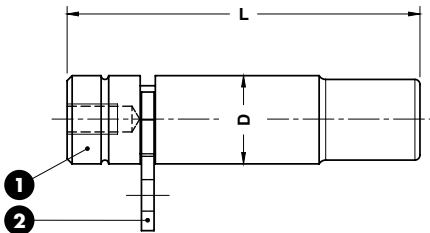
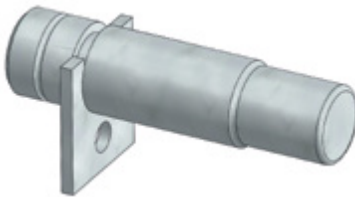


FORD CODE

WDX14-60-1312

FORD CODE	Size	A
WDX14-60-1310	M10	25
WDX14-60-1312	M12	30
WDX14-60-1316	M16	40
WDX14-60-1320	M20	44

PAD RETAINER PIN - STECKBOLZEN - PERNO DI ARRESTO



Respect the max. load  
 Maximale Nutzlast beachten  
 Rispettare il carico max.

Notes

- 1 **Material:** CK45
- 2 **Material:** St37  
WDX14-60-0155

STOCK



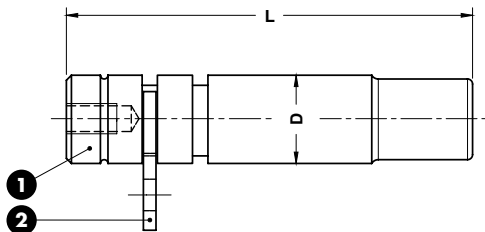
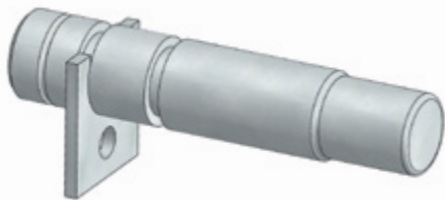
FORD CODE

WDX14-60-1435-A

FORD CODE	D	L	Load per pin* (kg)
WDX14-60-1425-A	25	120	1000
WDX14-60-1435-A	35	140	2500
WDX14-60-1450-A	50	180	5000
WDX14-60-1463-A	63	210	8000

\*Allowable load for pin under static load  
 Zulässigel gewicht für bolzen unter statischer belastung  
 Carico ammissibile per perno sottoposto a carico statico

PAD RETAINER PIN - STECKBOLZEN - PERNO DI ARRESTO



\* Allowable load for pin under static load  
 Zulässiges Gewicht für Bolzen unter statischer Belastung  
 Carico ammissibile per perno sottoposto a carico statico



Respect the max. load  
 Maximale Nutzlast beachten  
 Rispettare il carico max.

Notes

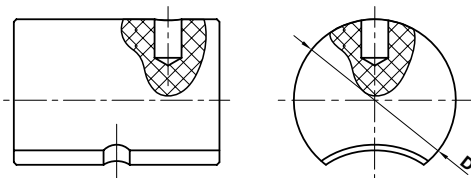
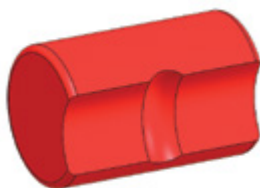
- 1 **Material:** CK45
- 2 **Material:** St37  
WDX14-60-0155



<b>FORD CODE</b>
WDX14-60-1535-A

FORD CODE	D	L	Load per pin* (kg)
WDX14-60-1525-A	25	145	1000 kg
WDX14-60-1535-A	35	170	2500 kg
WDX14-60-1550-A	50	215	5000 kg
WDX14-60-1563-A	63	255	8000 kg

SHOCK ABSORBER - HALTELEMENT - AMMORTIZZATORE



Notes

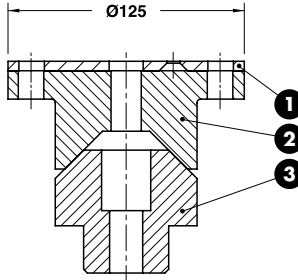
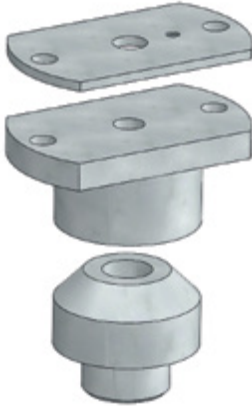
**Material:** Elastomer 92SH



<b>FORD CODE</b>
WDX14-60-1702

FORD CODE	Pad side pin	D
WDX14-60-1701	25	40
WDX14-60-1702	35	50
WDX14-60-1703	50	63
	63	63

LOCATING CONE - KEGELDISTANZ - CONO DI CENTRAGGIO



Notes

- 1 Material: St37
- 2 3 Material: 42CrMo4 - HRC: 58÷60



FORD CODE

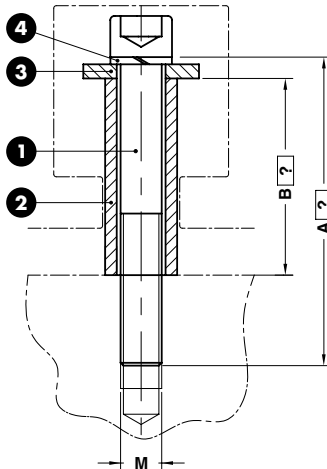
WDX14-62-0175

FORD CODE

WDX14-62-0175

Standard Ford

RETAINER BOLT - ZUGBOLZENSATZ - GRUPPO TIRANTE



Respect the max. load  
Maximale Nutzlast beachten  
Rispettare il carico max.

Notes

- 1 DIN 912
- 2 Tube DIN 2391
- 3 Material: CK45
- 4 DIN 127



FORD CODE

WDX14-65-1112

A=290 B=170

A290 B170

FORD CODE

M

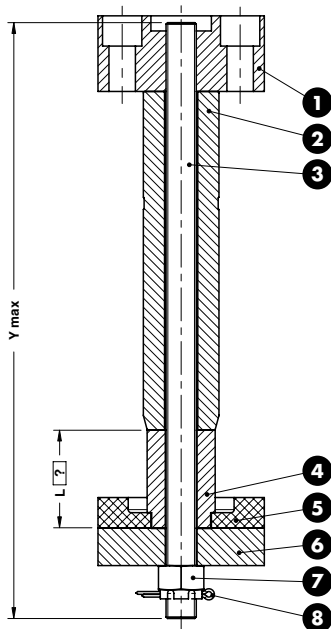
Max load (kg)

WDX14-65-1110 M10 100

WDX14-65-1112 M12 150

WDX14-65-1116 M16 250

## RETAINER BOLT - ZUGBOLZENSATZ - GRUPPO TIRANTE



Respect the max. load  
 Maximale Nutzlast beachten  
 Rispettare il carico max.

### Notes

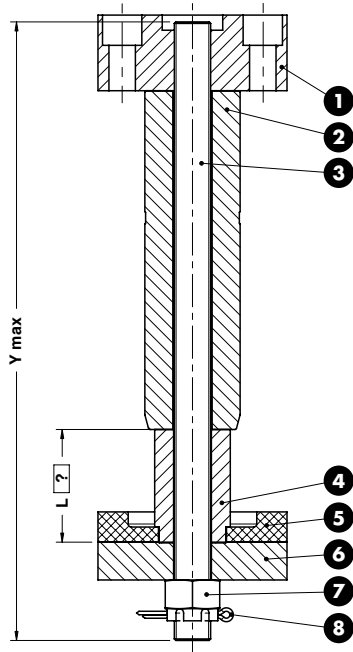
- ❶ WDX14-65-06110
- ❷ WDX146504050180/200/224/250
- ❸ WDX14650820350/370/394/420
- ❹ WDX14-65-05050
- ❺ WDX14-65-07110
- ❻ WDX14-65-05110
- ❼ M20 Hexagon slotted nut DIN 935
- ❽ Split Pin. DIN EN ISO 1234



ORDER EXAMPLE	FORD CODE	L=50
	WDX14-65-0150200	L50

FORD CODE	Y max	Max load (kg)
WDX14-65-0150180	350	450
WDX14-65-0150200	370	450
WDX14-65-0150224	394	450
WDX14-65-0150250	420	450
WDX14-65-0150280	450	450

RETAINER BOLT - ZUGBOLZENSATZ - GRUPPO TIRANTE



Respect the max. load  
 Maximale Nutzlast beachten  
 Rispettare il carico max.

Notes

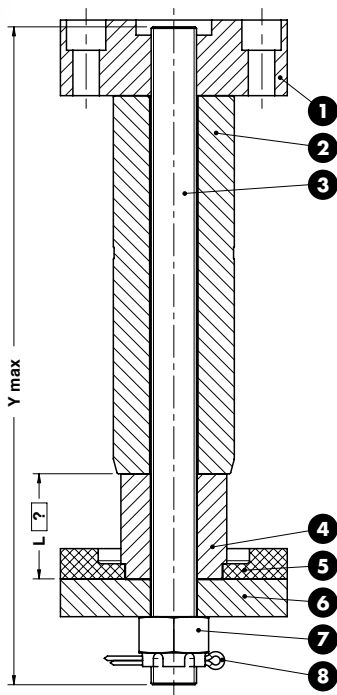
- ❶ WDX14-65-06150
- ❷ WDX14-65-04063200/224/250/280/315
- ❸ WDX14-65-0824385/409/435/465
- ❹ WDX14-65-05063
- ❺ WDX14-65-07125
- ❻ WDX14-65-05125
- ❼ M24 Hexagon slotted nut DIN 935
- ❽ Split Pin. DIN EN ISO 1234



ORDER EXAMPLE	FORD CODE	L=70
	WDX14-65-0263224	L70

FORD CODE	Y max	Max load (kg)
WDX14-65-0263200	385	750
WDX14-65-0263224	409	750
WDX14-65-0263250	435	750
WDX14-65-0263280	465	750

## RETAINER BOLT - ZUGBOLZENSATZ - GRUPPO TIRANTE



Respect the max. load  
 Maximale Nutzlast beachten  
 Rispettare il carico max.

### Notes

- ❶ WDX14-65-06150
- ❷ WDX14-65-04080250/280/315/ 355/340
- ❸ WDX14-65-0830435/465/500/ 540/585
- ❹ WDX14-65-05080
- ❺ WDX14-65-07150
- ❻ WDX14-65-05150
- ❼ M30 Hexagon slotted nut DIN 935
- ❽ Split Pin. DIN EN ISO 1234



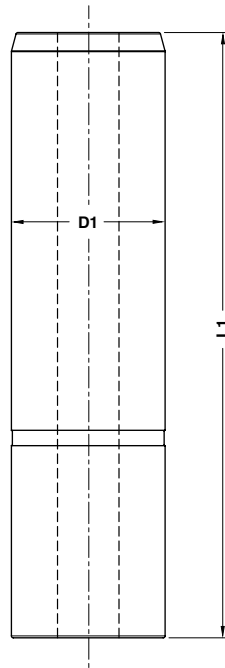
FORD CODE	L=65
WDX14-65-0380280	L65

FORD CODE	Y max	Max load (kg)
WDX14-65-0380250	435	1250
WDX14-65-0380280	465	1250
WDX14-65-0380315	500	1250
WDX14-65-0380355	540	1250
WDX14-65-0380400	585	1250

## GUIDE POST - FÜHRUNGSSÄULE - COLONNA GUIDA

### Notes

**Material:** 16MnCr5 - **HRC:** 57±62



Standard Ford

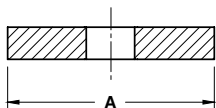
	<b>FORD CODE</b>
	WDX14-65-04050200

FORD CODE	D1	L1	FORD CODE	D1	L1
WDX14-65-04050180	50	180	WDX14-65-04063280	63	280
WDX14-65-04050200	50	200	WDX14-65-04063315	63	315
WDX14-65-04050224	50	224	WDX14-65-04080250	80	250
WDX14-65-04050250	50	250	WDX14-65-04080280	80	280
WDX14-65-04050280	50	280	WDX14-65-04080315	80	315
WDX14-65-04063200	63	200	WDX14-65-04080355	80	355
WDX14-65-04063224	63	224	WDX14-65-04080400	80	400
WDX14-65-04063250	63	250			

# WDX14-65

OMCR

## WASHER - SCHEIBE - RONDELLA



STOCK

### Notes

Material: Si37



### FORD CODE

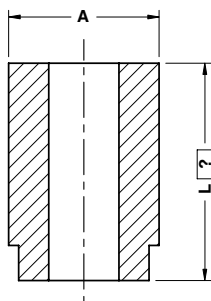
WDX14-65-05125

FORD CODE	Guide post	A
WDX14-65-05110	∅ 50	110
WDX14-65-05125	∅ 63	125
WDX14-65-05150	∅ 80	150

# WDX14-65

OMCR

## SPACER - DISTANZSTÜCK - DISTANZIALE



STOCK

### Notes

Material: Si37



### FORD CODE

WDX14-65-05063

L=70

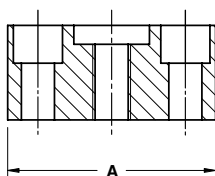
L70

FORD CODE	Guide post	A	L Max
WDX14-65-05050	∅ 50	45	65
WDX14-65-05063	∅ 63	50	75
WDX14-65-05080	∅ 80	70	70

# WDX14-65

OMCR

## RETAINER BOLT BLOCK - AUFNAHMEBOLZEN BLOCK - TASSELLO DI TENUTA



STOCK

### Notes

Material: Si37

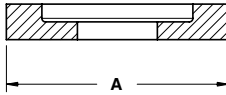


### FORD CODE

WDX14-65-06125

FORD CODE	Guide post	A
WDX14-65-06110	∅ 50	110
WDX14-65-06125	∅ 63	125
WDX14-65-06150	∅ 80	150

BUFFER - STOSSDÄMPFER - AMMORTIZZATORE



STOCK

Notes

**Material:** Elastomer 92SH



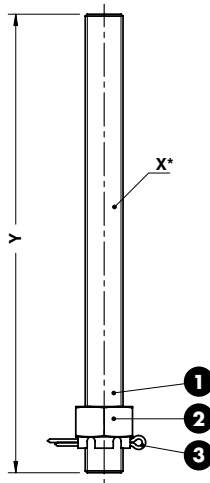
FORD CODE

WDX14-65-07125

FORD CODE	Guide post	A
WDX14-65-07110	Ø 50	110
WDX14-65-07125	Ø 63	125
WDX14-65-07150	Ø 80	150

Standard Ford

RETAINER BOLT ASSEMBLY  
AUFNAHMEBOLZEN ZUSAMMENBAU  
GRUPPO TIRANTE



Notes

- 1 Min. grade 8.8 DIN 975
- 2 Hexagon slotted nut DIN 935
- 3 Split Pin. DIN EN ISO 1234

STOCK



\* Threaded rod  
Gewindestange  
Asta filettata

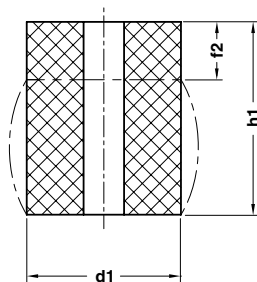


FORD CODE

WDX14-65-0820370

FORD CODE	Guide post	Y	X	FORD CODE	Guide post	Y	X
WDX14-65-0820350	Ø 50	180	M20 x 2.5	WDX14-65-0824465	Ø 63	280	M24 x 3.0
WDX14-65-0820370	Ø 50	200	M20 x 2.5	WDX14-65-0830435	Ø 63	315	M24 x 3.0
WDX14-65-0820394	Ø 50	224	M20 x 2.5	WDX14-65-0830465	Ø 80	250	M30 x 3.5
WDX14-65-0820420	Ø 50	250	M20 x 2.5	WDX14-65-0830500	Ø 80	280	M30 x 3.5
WDX14-65-0824385	Ø 63	200	M24 x 3.0	WDX14-65-0830540	Ø 80	315	M30 x 3.5
WDX14-65-0824409	Ø 63	224	M24 x 3.0	WDX14-65-0830585	Ø 80	355	M30 x 3.5
WDX14-65-0824435	Ø 63	250	M24 x 3.0				

## ELASTOMER SPRING - ELASTOMERFEDER - MOLLA IN ELASTOMERO



### Notes

**Material:** Elastomer 90SH



S = max. 30% H

STOCK



### FORD CODE

WDX14-70-194040

FORD CODE	d1	f2	h1	FORD CODE	d1	f2	h1	FORD CODE	d1	f2	h1
WDX14-70-194032	40	2,5	32	WDX14-70-195080	50	6,4	80	WDX14-70-198032	80	2,5	32
WDX14-70-194040	40	3,2	40	WDX14-70-1950100	50	8	100	WDX14-70-198040	80	3,2	40
WDX14-70-194050	40	4	50	WDX14-70-196332	63	2,5	32	WDX14-70-198050	80	4	50
WDX14-70-194063	40	5	63	WDX14-70-196340	63	3,2	40	WDX14-70-198063	80	5	63
WDX14-70-194080	40	6,4	80	WDX14-70-196350	63	4	50	WDX14-70-198080	80	6,4	80
WDX14-70-195032	50	2,5	32	WDX14-70-196363	63	5	63	WDX14-70-1980100	80	8	100
WDX14-70-195040	50	3,2	40	WDX14-70-196380	63	6,4	80	WDX14-70-1980125	80	10	125
WDX14-70-195050	50	4	50	WDX14-70-1963100	63	8	100				
WDX14-70-195063	50	5	63	WDX14-70-1963125	63	10	125				

# WDX15-70

## BUSH - BUCHSE - BOCCOLA



### Notes

**Material:** Si2

STOCK



### FORD CODE

WDX15-70-0101

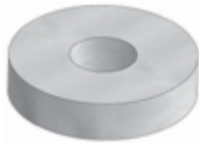
### FORD CODE

WDX15-70-0101

## WDX15-70

OMCR

### WASHER - SCHEIBE - RONDELLA



#### Notes

**Material:** 42CrMo4

STOCK



FORD CODE

WDX15-70-0201

FORD CODE

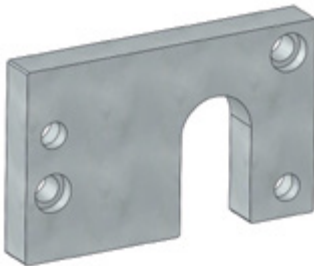
WDX15-70-0201

Standard Ford

## WDX15-70

OMCR

### SHIM - SPANNSCHLITZ - SPESSORE



#### Notes

**Material:** St52

STOCK



FORD CODE

WDX15-70-0301

FORD CODE

WDX15-70-0301

## WDX15-70

OMCR

### LOCATING PIN - ZENTRIERBOLZEN - CENTRAGGIO



#### Notes

**Material:** CK45

STOCK



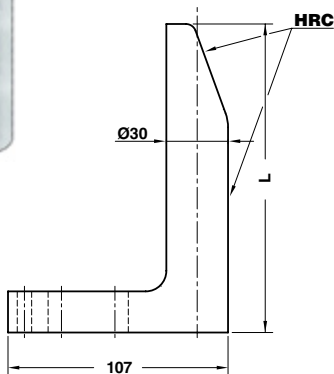
FORD CODE

WDX15-70-0401

FORD CODE

WDX15-70-0401

## GAGE HARDENED - EINWEISER GEHÄRTET - RIFERIMENTO INDURITO



### Notes

**Material:** CK60 - HRC: 56÷60

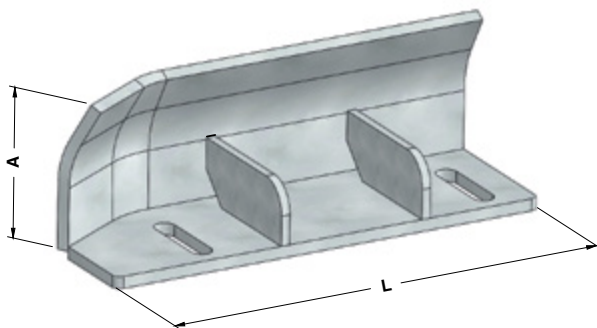


### FORD CODE

WDX16-60-01090

FORD CODE	L
WDX16-60-01065	65
WDX16-60-01090	90
WDX16-60-01120	120
WDX16-60-01150	150
WDX16-60-01180	180
WDX16-60-01250	250

## SIDE GUIDE - FÜHRUNG - GUIDA FOGLIO



### Notes

**Material:** S137



\*Opposite to drawing  
Spiegelverkehrt  
Opposto al disegno

\*\*As shown in drawing  
Gemäß zeichnung  
Come a disegno

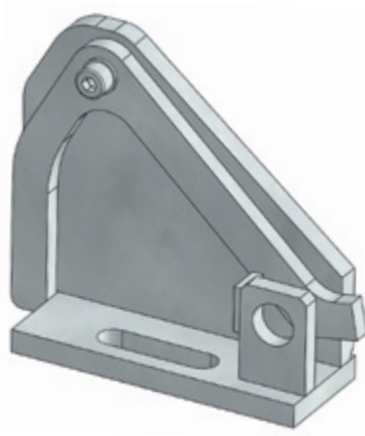


### FORD CODE

WDX16-70-0203

FORD CODE*	FORD CODE**	A	L	FORD CODE*	FORD CODE**	A	L
WDX16-70-0201	WDX16-70-0202	100	200	WDX16-70-0213	WDX16-70-0214	150	400
WDX16-70-0203	WDX16-70-0204	100	300	WDX16-70-0215	WDX16-70-0216	150	500
WDX16-70-0205	WDX16-70-0206	100	400	WDX16-70-0217	WDX16-70-0218	200	200
WDX16-70-0207	WDX16-70-0208	100	500	WDX16-70-0219	WDX16-70-0220	200	300
WDX16-70-0209	WDX16-70-0210	150	200	WDX16-70-0221	WDX16-70-0222	200	400
WDX16-70-0211	WDX16-70-0212	150	300	WDX16-70-0223	WDX16-70-0224	200	500

**SUPPORT FOR SENSOR - LAGEKONTROLLE FÜR PLATINEN - SUPPORTO SENSORE**



**Notes**

**Material:** Si37

**STOCK**

\*Gemäß zeichnung  
Come a disegno

\*\*Spiegelverkehrt  
Opposto al disegno



**FORD CODE**

**WDX16-70-0301R**

**FORD CODE**

**FORM**

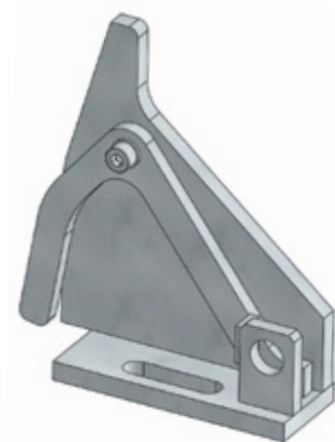
**WDX16-70-0301R**

As shown in drawing\*

**WDX16-70-0301L**

Opposite to drawing\*\*

**SUPPORT FOR SENSOR - LAGEKONTROLLE FÜR PLATINEN - SUPPORTO SENSORE**



**Notes**

**Material:** Si37

**STOCK**

\*Gemäß zeichnung  
Come a disegno

\*\*Spiegelverkehrt  
Opposto al disegno



**FORD CODE**

**WDX16-70-0701R**

**FORD CODE**

**FORM**

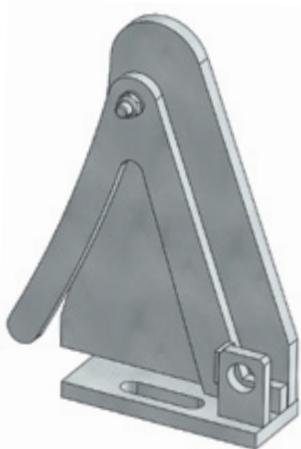
**WDX16-70-0701R**

As shown in drawing\*

**WDX16-70-0701L**

Opposite to drawing\*\*

## SUPPORT FOR SENSOR - LAGEKONTROLLE FÜR PLATINEN - SUPPORTO SENSORE



### Notes

**Material:** St37

**STOCK**

\*Gemäß zeichnung  
Come a disegno

\*\*Spiegelverkehrt  
Opposto al disegno



### FORD CODE

**WDX16-70-0901R**

### FORD CODE

### FORM

**WDX16-70-0901R**

As shown in drawing\*

**WDX16-70-0901L**

Opposite to drawing\*\*

## CLAMP - HALTESTÜCK - STAFFA



### Notes

**Material:** St37

**STOCK**



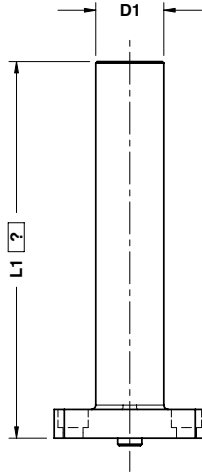
### FORD CODE

**WDX17-70-0501**

### FORD CODE

**WDX17-70-0501**

AIR PIN - DRUCKBOLZEN - CANDELA



L1 max = 350

Notes

**Material:** CK45 - 800÷1000 N/mm<sup>2</sup>



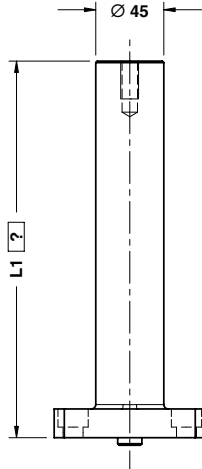
<b>FORD CODE</b>	L1=095
WDX17-60-0245	095

<b>FORD CODE</b>	D1
------------------	----

WDX17-60-0236	36
WDX17-60-0245	45

Standard Ford

AIR PIN - DRUCKBOLZEN - CANDELA



L1 max = 350

Notes

**Material:** CK45 - 800÷1000 N/mm<sup>2</sup>

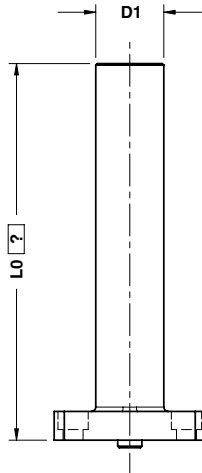


<b>FORD CODE</b>	L1=095
WDX17-60-0345	095

<b>FORD CODE</b>	D1
------------------	----

WDX17-60-0345	45
---------------	----

AIR PIN - DRUCKBOLZEN - CANDELA



L0 max = 360

Notes

**Material:** CK45 - 800÷1000 N/mm<sup>2</sup>

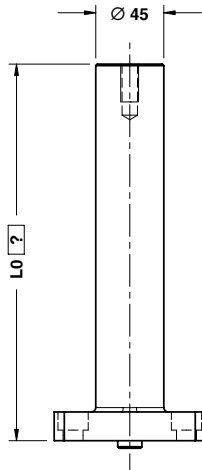
Only for replacement  
Nur für Reparatur  
Solo per riparazione



<b>FORD CODE</b>	<b>L0=345</b>
WDX17-70-0736250	L0345

FORD CODE	D1	L0
WDX17-70-0736175	36	30÷175
WDX17-70-0736250	36	176÷250
WDX17-70-0736360	36	251÷360
WDX17-70-0745175	45	30÷175
WDX17-70-0745250	45	176÷250
WDX17-70-0745360	45	251÷360

AIR PIN - DRUCKBOLZEN - CANDELA



L0 max = 360

Notes

**Material:** CK45 - 800÷1000 N/mm<sup>2</sup>

Only for replacement  
Nur für Reparatur  
Solo per riparazione



<b>FORD CODE</b>	<b>L0=345</b>
WDX17-70-0845250	L0345

FORD CODE	L0
WDX17-70-0845175	30÷175
WDX17-70-0845250	176÷250
WDX17-70-0845360	251÷360

# WDX19-70

OMCR

## BRACKET - BÜGEL - STAFFA



WDX19-70-0701



WDX19-70-0702



WDX19-70-0703

STOCK

### Notes

**Material:** Si37

Only for replacement  
Nur für Reparatur  
Solo per riparazione



FORD CODE

WDX19-70-0702

FORD CODE

WDX19-70-0701

WDX19-70-0702

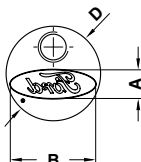
WDX19-70-0703

Standard Ford

# WDX20-65

OMCR

## TRADEMARK STAMP - BUCHSTABENSTEMPEL - PUNZONE MARCHIO



### Notes

**Material:** X155CrVMo12

**HRC:** 60÷62

STOCK



FORD CODE

WDX20-65-0313

FORD CODE

A

B

D

WDX20-65-0310

2.2

6

10

WDX20-65-0313

3.6

10

13

WDX20-65-0325

7.3

20

25

# WDX20-65

OMCR

## VISUAL LOCATOR PUNCH - ENDKONTROLLSTEMPEL - PUNZONE DI VISUALIZZAZIONE



### Notes

**Material:** X210Cr12 - **HRC:** 60÷62

STOCK



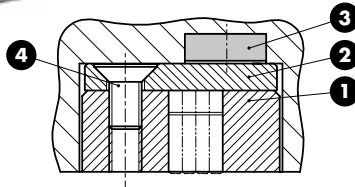
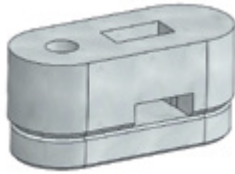
FORD CODE

WDX20-65-0601

FORD CODE

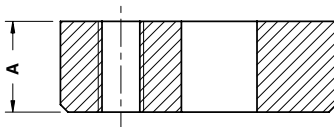
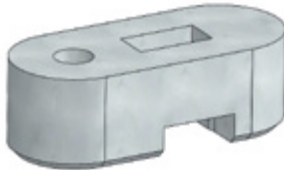
WDX20-65-0601

RETAINER FOR STAMPS - HALTEPLATTE - PORTATIMBRI



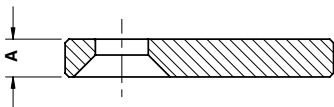
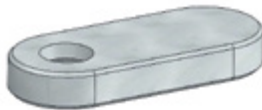
Notes	
1	WDX20-66-02110/02119
2	WDX20-66-02210/02219
3	Magnet Ø15x5 - Force=40N
4	M6x12 DIN EN ISO 10642
ORDER EXAMPLE	FORD CODE
	WDX20-66-0119-A
FORD CODE	
WDX20-66-0110-A	
WDX20-66-0119-A	

RETAINER FOR STAMPS - HALTEPLATTE - PORTATIMBRI



Notes	
<b>Material:</b> 90MnV8Ku - <b>HRC:</b> 60÷62	
<b>STOCK</b>	
ORDER EXAMPLE	FORD CODE
	WDX20-66-02119
FORD CODE	
	A
WDX20-66-02110	15
WDX20-66-02119	12

BACKING PLATE - DRUCKPLATTE - DISTANZIALE



Notes	
<b>Material:</b> 90MnV8Ku - <b>HRC:</b> 60÷62	
<b>STOCK</b>	
ORDER EXAMPLE	FORD CODE
	WDX20-66-02219
FORD CODE	
	A
WDX20-66-02210	5
WDX20-66-02219	7.7

RETAINER FOR STAMPS - HALTEPLATTE - PORTATIMBRI

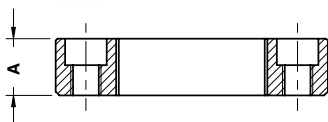


Notes	
1	WDX20-66-03112/03115
2	WDX20-66-03205/03208

	FORD CODE
	WDX20-66-03220-A
FORD CODE	
WDX20-66-03120-A	
WDX20-66-03220-A	

Standard Ford

RETAINER FOR STAMPS - HALTEPLATTE - PORTATIMBRI

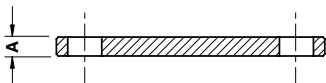


Notes	
<b>Material:</b> 90MnV8Ku - <b>HRC:</b> 60÷62	



	FORD CODE
	WDX20-66-03115
FORD CODE	
A	
WDX20-66-03112	12
WDX20-66-03115	15

BACKING PLATE - DRUCKPLATTE - DISTANZIALE



Notes	
<b>Material:</b> 90MnV8Ku - <b>HRC:</b> 60÷62	



	FORD CODE
	WDX20-66-03208
FORD CODE	
A	
WDX20-66-03205	5
WDX20-66-03208	7.7

## VISUAL LOCATOR PUNCH - ENDKONTROLLSTEMPEL - PUNZONE DI VISUALIZZAZIONE

### Notes

**Material:** X210Cr12 - **HRC:** 60-62

Only for replacement

Nur für Reparatur

Solo per riparazione

STOCK



FORD CODE

WDX20-70-0101

FORD CODE

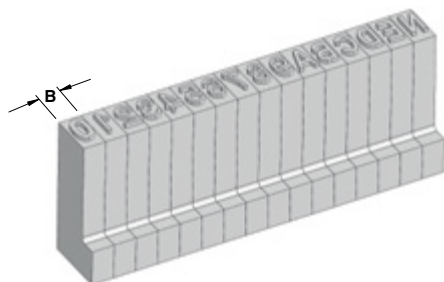
WDX20-70-0101

## STAMPS SET - STEMPELSATZ - SET PUNZONI

### Notes

**Material:** X155CrVMo121 - **HRC:** 60-62

STOCK



FORD ASSEMBLY CODE

\*\*WDX20-70-0250

\*\* Stamps set for date only  
Stempelsatz nur für das Datum  
Set di punzoni solo per date

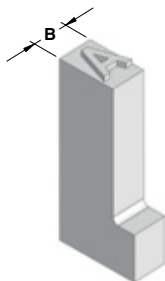
FORD ASSEMBLY N°	FORD CODE	Amount	B	Stamp	FORD ASSEMBLY N°	FORD CODE	Amount	B	Stamp
**WDX20-70-0250	WDX20-70-0200	2	2,5	0	**WDX20-70-0250	WDX20-70-0208	2	2,5	8
	WDX20-70-0201	3	2,5	1		WDX20-70-0209	2	2,5	9
	WDX20-70-0202	3	2,5	2		WDX20-70-0251	1	2,5	A
	WDX20-70-0203	2	2,5	3		WDX20-70-0252	1	2,5	B
	WDX20-70-0204	2	2,5	4		WDX20-70-0253	1	2,5	C
	WDX20-70-0205	2	2,5	5		WDX20-70-0254	2	2,5	D
	WDX20-70-0206	2	2,5	6		WDX20-70-0255	1	2,5	E
WDX20-70-0207	2	2,5	7	WDX20-70-0256	1	2,5	N		

## STAMPS - BUCHSTABENSTEMPEL - PUNZONE MARCHIO

### Notes

**Material:** X155CrMo121 - **HRC:** 60±62

STOCK



FORD CODE

WDX20-70-0201

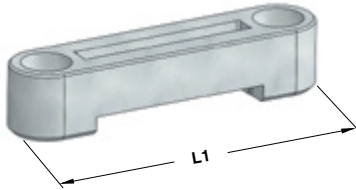
\* Use only for separate letter stamps  
 nur zum Einsatz für Stempel einzelner Buchstaben  
 Da usare solo per punzoni di lettere singole

FORD CODE	B	Stamp	FORD CODE	B	Stamp	FORD CODE	B	Stamp
WDX20-70-0200	2,5	0	WDX20-70-0217	3,0	E	WDX20-70-0234	2,5	V
WDX20-70-0201	2,5	1	WDX20-70-0218	2,5	F	WDX20-70-0235	3,5	W
WDX20-70-0202	2,5	2	WDX20-70-0219	3,0	G	WDX20-70-0236	2,5	X
WDX20-70-0203	2,5	3	WDX20-70-0220	3,0	H	WDX20-70-0237	2,5	Y
WDX20-70-0204	2,5	4	WDX20-70-0221	2,5	I	WDX20-70-0238	2,5	Z
WDX20-70-0205	2,5	5	WDX20-70-0222	2,5	J	WDX20-70-0239	1,5	-
WDX20-70-0206	2,5	6	WDX20-70-0223	3,0	K	WDX20-70-0240	1,5	=
WDX20-70-0207	2,5	7	WDX20-70-0224	2,5	L	WDX20-70-0241	1,5	≡
WDX20-70-0208	2,5	8	WDX20-70-0225	3,5	M	WDX20-70-0242	0,5	FILLER
WDX20-70-0209	2,5	9	WDX20-70-0226	3,0	N	WDX20-70-0243	1,0	FILLER
WDX20-70-0210	1,5	FILLER	WDX20-70-0227	3,5	½	* WDX20-70-0251	2,5	A
WDX20-70-0211	2,0	FILLER	WDX20-70-0228	3,0	P	* WDX20-70-0252	2,5	B
WDX20-70-0212	2,5	FILLER	WDX20-70-0229	3,0	Q	* WDX20-70-0253	2,5	C
WDX20-70-0213	3,0	A	WDX20-70-0230	3,0	R	* WDX20-70-0254	2,5	D
WDX20-70-0214	3,0	B	WDX20-70-0231	3,0	S	* WDX20-70-0255	2,5	E
WDX20-70-0215	3,0	C	WDX20-70-0232	2,5	T	* WDX20-70-0256	2,5	N
WDX20-70-0216	3,0	D	WDX20-70-0233	3,0	U			

RETAINER FOR STAMPS - HALTEPLATTE - PORTATIMBRI



FORM A



FORM B

Notes

**Material:** X155CrVMo12  
**HRC:** 60÷62

Only for replacement  
Nur für Reparatur  
Solo per riparazione

STOCK



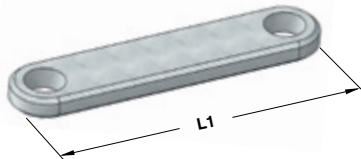
<b>FORD CODE</b>
WDX20-70-0333

FORD CODE	FORM	L1
WDX20-70-0330	A	30
WDX20-70-0333	A	32,5
WDX20-70-0352	B	52
WDX20-70-0372	B	72

BACKING PLATE - DRUCKPLATTE - DISTANZIALE



FORM A



FORM B

Notes

**Material:** 90MnV8KU - **HRC:** 60÷62

Only for replacement  
Nur für Reparatur  
Solo per riparazione

STOCK



<b>FORD CODE</b>
WDX20-70-0432

FORD CODE	FORM	L1
WDX20-70-0430	A	30
WDX20-70-0432	A	32
WDX20-70-0452	B	52
WDX20-70-0472	B	72

LIFTING PIN - TRAGBOLZEN MIT FALLRINGSICHERUNG - PERNO DI SOLLEVAMENTO



Respect the max load  
 Maximale Nutzlast beachten  
 Rispettare il carico Max

**WARNING - ACHTUNG - ATTENZIONE:**

For safety reason, please consider always that the weight of the die has to be supported by just 2 lifting pins.

Aus Sicherheitsgründen stets berücksichtigen, dass zwei Tragbolzen das gesamte Werkzeuggewicht tragen müssen.

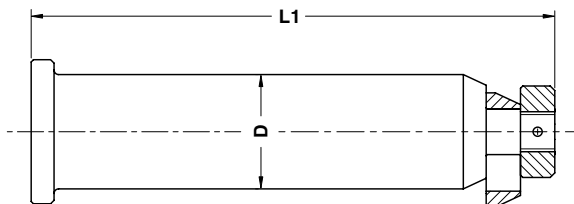
Per ragioni di sicurezza, considerare sempre che il peso dello stampo deve essere sopportato da 2 soli perni.

**Notes**

**Material:** 42CrMo4



Standard Ford

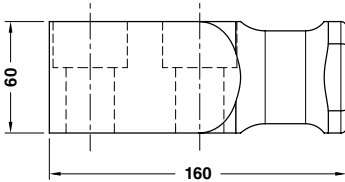
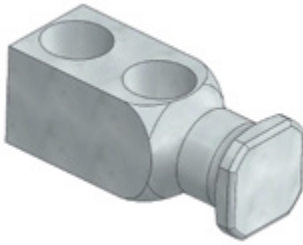


**FORD CODE**

WDX22-60-0150

FORD CODE	Max load (kg)	Max die weight (kg)	D	L1
WDX22-60-0135	1500	3000	35	165
WDX22-60-0150	5000	10000	50	230
WDX22-60-0163	20000	40000	63	320
WDX22-60-0180	30000	60000	80	370

LIFTING BRACKET - TRAGZAPFEN - STAFFA DI SOLLEVAMENTO



STOCK



Respect the max. load  
 Maximale Nutzlast beachten  
 Rispettare il carico max.

**WARNING - ACHTUNG - ATTENZIONE:**

For safety reason, please consider always that the weight of the die has to be supported by just 2 lifting brackets.

Aus Sicherheitsgründen stets berücksichtigen, dass zwei Tragzapfens das gesamte Werkzeuggewicht tragen müssen.

Per ragioni di sicurezza, considerare sempre che il peso dello stampo deve essere sopportato da 2 sole staffe.

**Notes**

**Material:** CK45 - 700÷800 N/mm<sup>2</sup>

Screws not included

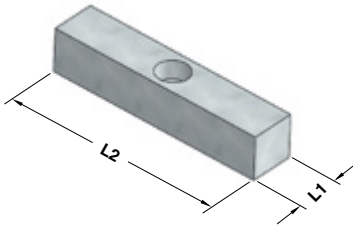


FORD CODE

WDX22-70-0501

FORD CODE	Max load (kg)	Max die weight (kg)
WDX22-70-0501	5000	10000

STANDARD KEY - PASSFEDER - CHIAVETTA



**Notes**

**Material:** CK45

STOCK



FORD CODE

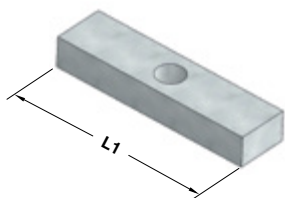
WDX30-60-0125180

FORD CODE	L1	L2	Holes
WDX30-60-0125125	25	125	1
WDX30-60-0125180	25	180	2
WDX30-60-0130125	30	125	1
WDX30-60-0130180	30	180	2

# WDX30-60



## STANDARD KEY - PASSFEDER - CHIAVETTA



### Notes

**Material:** CK45

**STOCK**



### FORD CODE

WDX30-60-02125

### FORD CODE

L1

WDX30-60-02080

80

WDX30-60-02125

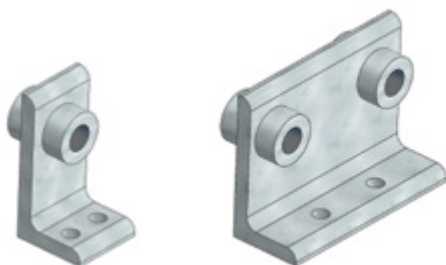
125

Standard Ford

# WDX35-70



## AIR COUPLING BRACKET - LUFTANSCHLUSSBOCK - SUPPORTO INNESTI RAPIDI



WDX35-70-1401

WDX35-70-1502

### Notes

**Material:** Si37

**STOCK**



### FORD CODE

WDX35-70-1502

### FORD CODE

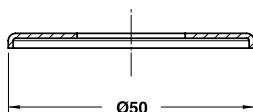
WDX35-70-1401

WDX35-70-1502

# WDX35-70



## COLOR MARK AIR CONNECTION - FARBIGE SCHEIBE - COPERCHIO COLORATO



### Notes

**Material:** Si37

**STOCK**



### FORD CODE

WDX35-70-1612

FORD CODE	Color designation	Paint number	FORD CODE	Color designation	Paint number	FORD CODE	Color designation	Paint number
WDX35-70-1611	Flamed red	RAL 3000	WDX35-70-1631	Jet black	RAL 9005	WDX35-70-1652	Deep orange	RAL 2011
WDX35-70-1612	Zinc yellow	RAL 1018	WDX35-70-1632	Gray white	RAL 9002	WDX35-70-1661	Iron grey	RAL 7011
WDX35-70-1621	Azure blue	RAL 5009	WDX35-70-1641	Clay brown	RAL 8003	WDX35-70-1662	Light pink	RAL 3015
WDX35-70-1622	Pastel green	RAL 6019	WDX35-70-1651	Patina green	RAL 6000			





MODULA  
www.modula.es

ROBROM  
Logistics

MODULA  
www.modula.es

ROBROM  
Logistics

MODULA  
www.modula.es

ROBROM  
Logistics



www.modula.es